


ATB-45-17.196 (122339)  
Design Criteria  
LGT Submittal

Location 

Location ID: 6604 ✕  
 Located On: CENTER RD  
 Direction: 2-WAY  
 AADT: 3880 (2024)  
 NB AADT: 1986 (2024)  
 SB AADT: 1894 (2024)

[View Detail in a New Search](#)  
[Go to Record in Current Search](#)

Record <span>1</span> of 1 Goto Record <input type="text"/> go								
Location ID	6604	MPO ID						
Type	SPOT	HPMS ID						
On NHS	No	On HPMS	No					
LRS ID	SATBSR00045**C	LRS Loc Pt.	17.64					
SF Group	RURAL_MINOR_ARTERIAL (2024)	Route Type	SR					
AF Group	RURAL_MINOR_ARTERIAL (2024)	Route	00045					
GF Group	RURAL_MINOR_ARTERIAL (2024)	Active	Yes					
Class Dist Grp		Category	State Program					
Seas Class Grp	RURAL_MINOR_ARTERIAL (2024)							
WIM Group								
QC Group	Perm							
Funct'l Class	4 - Minor Arterial	Milepost						
Located On	CENTER RD							
Loc On Alias	069							
More Detail	Legal Speed = 55mph							
<b>STATION DATA</b>								
Directions: <b>2-WAY</b> <b>NB</b> <b>SB</b> ?								
<div>1 1</div>								
<b>AADT</b> ?								
	Year	AADT	DHV-30	K %	D %	PA	BC	Src
	2023	3,769	403	11	53	3,646 (97%)	123 (3%)	
	2022	3,495	361	10	58	3,381 (97%)	114 (3%)	
	2021	3,622	375	10	57	3,516 (97%)	106 (3%)	
	2020	3,369	363	11	51	3,266 (97%)	103 (3%)	
	2019	3,876	397	10	59	3,764 (97%)	112 (3%)	
<div>&lt;&lt; &lt; &gt; &gt;&gt;</div> <div>1-5 of 22</div>								

design exceptions when they are not met or exceeded are set forth in **Section 105.2** and Figure 105-1. The designer should call attention to any design features that require a design exception as soon as possible, but no later than the first stage review submittal as defined in the Location & Design Manual, Volume Three.

Other design values, policies, practices, etc. that are mentioned in this Manual are guidelines intended to promote uniformity and good design. Deviation from these guidelines does not require a formal design exception; however, it may still be necessary to justify or otherwise seek approval from ODOT of the proposed design when deviations are necessary. This should be accomplished through the normal review process.

Ramps do not have continuous design speeds throughout their lengths. However, design exceptions are required for not meeting the lower range for speed related items (see Section 503.2 for directional and loop ramps). In addition, design exceptions for non-speed related items (e.g., lane width, shoulder width, bridge width, and lateral clearance) are required.

A design exception should be reevaluated if the project has not sold within five years of the approved design exception.

Design exceptions will not be required for projects that do not change or provide the opportunity to change the basic highway cross-section or geometry due to the scope of work; e.g. resurfacing, bridge deck overlays, rest areas, lighting, signing, signalization, fencing, guardrail, slide corrections, etc. A change in the basic highway cross section would include any change to the lane width, shoulder width, pavement cross slope or additional earthwork beyond the graded shoulder. Design Exceptions are required for major rehabilitation projects such as full depth pavement replacement even if they do not change the basic highway geometry; however, full-depth pavement reclamation projects will not require a design exception unless an applicable safety study for the project area or the ODOT Safety Integrated Project (SIP) Maps, document historical crash trends. See **Section 106** for additional information.

Side roads with more than 600' of approach work do require design exceptions.

## **105.2 Design Controlling Criteria that Require a Design Exception**

Exceptions must be processed for the following design controlling criteria when they will not be attained:

**High Speed Roadways** (Interstate highways, other freeways and roadways with a design speed  $\geq 50$  mph)

1. Lane Width
2. Shoulder Width - See Note (A)
3. Horizontal Curve Radius

Review once further into design

4. Maximum Grade
5. Stopping Sight Distance (Horizontal and Crest Vertical Curves)
6. Superelevation Rate
7. Vertical Clearance
8. Pavement Cross Slope
9. Design Loading Structural Capacity

**Low Speed Roadways** (design speed <50 mph)

1. Design Loading Structural Capacity
2. Lane Width (only if required for the National Network, see **Section 105.3** below)

Note (A) - The Design Exception should focus on the Treated Shoulder Width for Interstate, Freeways, Expressways or other Multilane Divided Facilities. All other facilities should focus on the Graded Shoulder Width.

In addition to the above geometric design features, design exceptions are also required when existing non-standard bridge parapets and curb configurations are to be retained. For details on non-standard bridge parapets see ODOT Bridge Design Manual or contact the Office of Structural Engineering.

See Section 503.2 for design exception requirements for ramps.

### **105.3 National Network (or National Truck Network)**

The National Network was established by Congress in 1982 with the Surface Transportation Assistance Act as the network of highways designated for use by large trucks. In Ohio, the National Network consists of all Interstate Routes and the old Federal Aid Primary (FAP) Routes. One of the criteria for the National Network is, “The route consists of lanes designed to be a width of 12 feet or more or is otherwise consistent with highway safety.”

In lieu of providing 12’ lane widths for all lanes on the National Network, a single 12’ lane in each direction can be provided. For low speed facilities (45 mph design speed or lower) a lane width design exception shall be required only if a single 12’ lane in each direction cannot be provided. For high speed facilities (50 mph design speeds or higher) a lane width design exception shall be required if a single 12’ lane in each direction cannot be provided and if the proposed widths for all lanes doesn’t meet the criteria shown in Fig. 301-2, Fig. 301-4 or Fig. 303-1. The emphasis of the lane width design exception should focus on the impacts of the truck traffic such as truck involved crashes (existing and expected), truck off-tracking, etc. Design exceptions

# STOPPING SIGHT DISTANCE

## 201-1

REFERENCE SECTION

201.2 & 201.2.1

HEIGHT OF EYE 3.50'

HEIGHT OF OBJECT 2.00'

$$SSD = 1.47Vt + 1.075\frac{V^2}{a}$$

SSD = stopping sight distance, ft;  
t = brake reaction time, 2.5s;  
V = design speed, mph;  
a = deceleration rate, 11.2ft/s<sup>2</sup>

DESIGN SPEED (mph)	DESIGN SSD (feet)	DESIGN SPEED (mph)	DESIGN SSD (feet)
20	115	48	400
21	120	49	415
22	130	50	425
23	140	51	440
24	145	52	455
25	155	53	465
26	165	54	480
27	170	55	495
28	180	56	510
29	190	57	525
30	200	58	540
31	210	59	555
32	220	60	570
33	230	61	585
34	240	62	600
35	250	63	615
36	260	64	630
37	270	65	645
38	280	66	665
39	290	67	680
40	305	68	695
41	315	69	715
42	325	70	730
43	340	71	745
44	350	72	765
45	360	73	780
46	375	74	800
47	385	75	820

# **MAXIMUM CENTERLINE DEFLECTION WITHOUT HORIZONTAL CURVE**

**202-1**

REFERENCE SECTION

**202.2**

	DESIGN SPEED	MAX. DEFLECTION *
LOW SPEED	25	5° 30'
	30	3° 45'
	35	2° 45'
	40	2° 05'
	45	1° 40'
HIGH SPEED	50	1° 05'
	55	1° 00'
	60	0° 55'
	65	0° 50'
	70	0° 45'
	75	0° 45'

\* ROUNDED TO NEAREST 5'

Based on the Allowable Pavement Transition formulae (301.1.4):

High Speed:  $\tan \Delta = 1.0/V$

Low Speed:  $\tan \Delta = 60/V^2$

Where: V = Design Speed

$\Delta$  = Deflection Angle

Note:

The recommended minimum distances between consecutive horizontal deflections is:

High Speed - 200'

Low Speed - 100'

<b>MAXIMUM DEGREE OF CURVE</b>	<b>202-2</b>
	REFERENCE SECTION 202.3

DESIGN SPEED (mph)	MAXIMUM DEGREE OF CURVE (A)				DESIGN SPEED (mph)	MAXIMUM DEGREE OF CURVE (A)			
	RURAL	HIGH- SPEED URBAN	LOW-SPEED URBAN RAMPS/ INTERCHANGE	LOW- SPEED URBAN		RURAL	HIGH- SPEED URBAN	LOW-SPEED URBAN RAMPS/ INTERCHANGE	LOW- SPEED URBAN
MAXIMUM SUPERELEVATION RATE				MAXIMUM SUPERELEVATION RATE					
.08	.06	.06	.04	.08	.06	.06	.04		
20	--	—	—	66°30'	45	9°45'	—	9°00'	8°00'
21	--	—	—	58°15'	46	9°15'	—	--	--
22	--	—	—	51°15'	47	8°45'	—	--	--
23	--	—	—	45°15'	48	8°15'	—	--	--
24	--	—	—	40°15'	49	8°00'	—	--	--
25	42°30'	—	39°45'	37°00'	50	7°30'	6°45'	--	--
26	38°00'	—	36°00'	33°00'	51	7°15'	6°30'	--	--
27	34°00'	—	32°45'	29°30'	52	6°45'	6°15'	--	--
28	31°15'	—	29°45'	26°45'	53	6°30'	6°00'	--	--
29	28°30'	—	27°15'	24°30'	54	6°15'	5°45'	--	--
30	26°45'	—	24°45'	22°45'	55	6°00'	5°30'	--	--
31	24°30'	—	23°00'	21°00'	56	5°45'	5°15'	--	--
32	22°30'	—	21°15'	19°15'	57	5°30'	5°00'	--	--
33	21°15'	—	19°30'	18°00'	58	5°15'	4°45'	--	--
34	19°45'	—	18°15'	16°45'	59	5°00'	4°30'	--	--
35	18°15'	—	16°45'	15°30'	60	4°45'	4°15'	--	--
36	16°45'	—	15°45'	14°15'	61	4°30'	4°00'	--	--
37	15°45'	—	14°30'	13°15'	62	4°15'	4°00'	--	--
38	14°45'	—	13°30'	12°30'	63	4°15'	3°45'	--	--
39	13°45'	—	12°45'	11°30'	64	4°00'	3°30'	--	--
40	12°45'	—	11°45'	10°45'	65	3°45'	3°30'	--	--
41	12°15'	—	11°15'	10°15'	66	3°45'	3°15'	--	--
42	11°45'	—	10°30'	9°45'	67	3°30'	3°15'	--	--
43	11°00'	—	10°00'	9°00'	68	3°30'	3°00'	--	--
44	10°30'	—	9°30'	8°45'	69	3°15'	3°00'	--	--
					70	3°15'	2°45'	--	--
					71	3°00'	2°45'	--	--
					72	3°00'	2°30'	--	--
					73	2°45'	2°30'	--	--
					74	2°45'	2°15'	--	--
					75	2°30'	2°15'	--	--

(A) See Superelevation Tables 202-7, 8, 9, and 10 for corresponding radii values.

# MAXIMUM DEGREE OF CURVE WITHOUT SUPERELEVATION

## 202-3

REFERENCE SECTION  
202.4.3

		DEGREE OF CURVE			
		DESIGN SPEED (mph)	RURAL HIGHWAYS	URBAN STREETS & HIGHWAYS	
LOW SPEED	20	--	FIGURE 202-7	54°23'	FIGURE 202-9
	25	2°35'		29°20'	
	30	1°53'		17°30'	
	35	1°26'		11°28'	
	40	1°08'		7°42'	
	45	0°55'		5°40'	
HIGH SPEED	50	0°45'		0°47'	FIGURE 202-8
	55	0°38'		0°39'	
	60	0°32'		0°33'	
	65	0°28'		0°29'	
	70	0°25'		0°26'	
	75	0°23'		0°23'	

# SUPERELEVATION TRANSITIONS

## 202-4

REFERENCE SECTION

202.4.5 & 202.4.8

Maximum Relative Gradient for  
Profiles Between the Edge of  
Traveled Way and the Centerline or  
Reference Line (Axis of Rotation)

Design Speed (mph)	Maximum Relative Gradient (Percent) " $\Delta$ "	Equivalent Maximum Relative Slope "G"
20	0.74	135:1
25	0.70	143:1
30	0.66	152:1
35	0.62	161:1
40	0.58	172:1
45	0.54	185:1
50	0.50	200:1
55	0.47	213:1
60	0.45	222:1
65	0.43	233:1
70	0.40	250:1
75	0.38	263:1

Adjustment Factors,  $b_w$

Number of Lanes, Rotated $n_1$	Divided * Roadways $b_w$	Undivided Roadways $b_w$
1	1.00	1.00
1.5	1.00	0.83
2	1.00	0.75
2.5	1.00	0.70
3	1.00	0.67
3.5	1.00	0.64

\* Interstates, Freeways,  
Expressways and Ramps

In Figures 202-7, 202-8 and 202-10, the table values for the Minimum Length of Superelevation Runoff,  $L_r$ , were determined by the following equation:

$$L_r = \frac{(w \times n_1) e_d}{\Delta} (b_w) \times 100 \quad \text{or} \quad L_r = (w \times n_1)(e_d)(G)(b_w)$$

The equation can also be used to determine  $L_r$ , when more than one lane is rotated about the centerline or the edge or if the lane width is other than 12 feet for Figures 202-7 and 202-8 or 16 feet for Figure 202-10.

Once  $L_r$  has been determined, the Minimum Length of Tangent Runout,  $L_t$ , should be determined by the following equation:

$$L_t = (e_{NC} \div e_d) L_r$$

The equation for  $L_t$  can be used by Figures 202-7, 202-8, 202-9 and 202-10.

Where:

$L_r$  = minimum length of superelevation runoff, ft

$L_t$  = minimum length of tangent runout, ft

$\Delta$  = maximum relative gradient, percent

$n_1$  = number of lanes rotated

$w$  = width of one traffic lane, ft (typically 12 ft)

$e_d$  = design superelevation rate

$e_{NC}$  = normal cross slope rate, (0.016)

$G$  = equivalent maximum relative slope, (the reciprocal of  $\Delta$ )

$b_w$  = adjustment factor for number of lanes rotated



**SUPERELEVATION AND RUNOFF LENGTHS  
FOR HORIZONTAL CURVES ON RURAL  
HIGHWAYS** - Based on Max. S.E. of 0.08 ft/ft -

**202-7**

**REFERENCE SECTION  
202.4.1, 202.4.3,  
& 202.4.5**

		DESIGN SPEED															
Dc	RADIUS	25		30		35		40		45		50		55		60	
		e <sub>d</sub>	L <sub>r</sub>	e <sub>d</sub>	L <sub>r</sub>	e <sub>d</sub>	L <sub>r</sub>	e <sub>d</sub>	L <sub>r</sub>	e <sub>d</sub>	L <sub>r</sub>	e <sub>d</sub>	L <sub>r</sub>	e <sub>d</sub>	L <sub>r</sub>	e <sub>d</sub>	L <sub>r</sub>
0°15'	22918	NC	--	NC	--	NC	--	NC	--	NC	--	NC	--	NC	--	NC	--
0°30'	11459	NC	--	NC	--	NC	--	NC	--	NC	--	NC	--	NC	--	NC	--
0°45'	7639	NC	--	NC	--	NC	--	NC	--	NC	--	.016	39	.019	49	.022	59
1°00'	5730	NC	--	NC	--	NC	--	NC	--	.017	38	.021	51	.025	64	.029	78
1°30'	3820	NC	--	NC	--	.017	33	.021	44	.025	56	.030	72	.035	90	.041	110
2°00'	2865	NC	--	.017	32	.022	43	.027	56	.032	72	.038	92	.045	116	.051	136
2°30'	2292	NC	--	.021	39	.026	51	.033	69	.039	87	.046	111	.053	136	.061	163
3°00'	1910	.018	31	.024	44	.031	60	.038	79	.045	100	.053	128	.060	154	.068	182
3°30'	1637	.021	37	.028	52	.035	68	.043	89	.050	111	.058	140	.066	169	.074	198
4°00'	1432	.024	42	.031	57	.039	76	.047	98	.055	123	.063	152	.071	182	.078	208
4°30'	1273	.026	45	.034	63	.042	82	.051	106	.059	131	.068	164	.075	192	.080	214
5°00'	1146	.029	50	.037	68	.046	89	.055	114	.063	140	.071	171	.078	200	△=4°46'30"	
5°30'	1042	.031	54	.040	73	.049	95	.058	120	.066	147	.074	178	.080	205	▲=0°32'	
6°00'	955	.033	57	.042	77	.051	99	.061	126	.070	156	.077	185	△=5°58'05"		NC = Normal Crown	
6°30'	881	.035	61	.045	83	.054	105	.063	131	.072	160	.079	190	▲=0°38'			
7°00'	819	.037	64	.047	86	.056	109	.066	137	.074	165	.080	192				
7°30'	764	.039	67	.049	90	.058	113	.068	141	.076	169	.080	192				
8°00'	716	.041	71	.051	94	.060	116	.070	145	.078	174	△=7°33'30"					
8°30'	674	.042	73	.052	95	.062	120	.072	149	.079	176	▲=0°45'					
9°00'	637	.044	76	.054	99	.064	124	.074	153	.080	178						
9°30'	603	.046	79	.055	101	.066	128	.075	155	.080	178						
10°00'	573	.047	81	.057	104	.067	130	.077	159	△=9°45'40"							
10°30'	546	.048	83	.058	106	.069	134	.078	161	▲=0°55'							
11°00'	521	.049	85	.059	108	.070	136	.079	164								
11°30'	498	.050	86	.061	112	.071	138	.079	164								
12°00'	477	.051	88	.062	114	.073	142	.080	166								
12°30'	458	.052	90	.063	115	.074	143	.080	166								
13°00'	441	.053	91	.064	117	.075	145	△=12°54'15"									
13°30'	424	.054	93	.066	121	.076	147	▲= 1°08'									
14°00'	409	.055	95	.067	123	.077	149										
14°30'	395	.056	97	.068	125	.077	149										
15°00'	382	.057	98	.069	126	.078	151										
16°30'	347	.059	102	.071	130	.079	153										
18°00'	318	.062	107	.074	135	.080	155										
20°00'	286	.064	110	.076	139	△=18°14'50"											
22°00'	260	.067	115	.078	143	▲= 1°26'											
23°00'	249	.068	117	.079	145												
25°00'	229	.071	122	.080	146												
26°30'	216	.072	124	.080	146												
28°00'	205	.074	127	△=26°46'25"													
31°00'	185	.076	131	▲= 1°53'													
34°00'	169	.078	134														
36°00'	159	.079	136														
38°00'	151	.079	136														
40°00'	143	.080	138	△=42°45'30"													
42°00'	136	.080	138	▲= 2°35'													

ed = Design Superelevation Rate  
L = Min. Runoff Length, 2-Lane Highway Rotated

△ = Max. Dc for the Design Speed  
▲ = Max. Dc Without Superelevation

		DESIGN SPEED			
Dc	RADIUS	65		70	
		ed	Lr	ed	Lr
0°15'	22918	NC	--	NC	--
0°30'	11459	.017	48	.019	57
0°45'	7639	.025	70	.028	84
1°00'	5730	.032	90	.036	108
1°15'	4584	.039	110	.044	132
1°30'	3820	.046	129	.051	153
1°45'	3274	.052	146	.058	174
2°00'	2865	.058	163	.065	195
2°15'	2546	.063	177	.071	213
2°30'	2292	.068	191	.075	225
2°45'	2083	.072	202	.078	234
3°00'	1910	.075	210	.080	240
3°15'	1763	.078	219	△=3°09'50"	
3°30'	1637	.079	221	▲=0°25'	
3°45'	1528	.080	224		

△=3°52'15"  
▲=0°28'

e<sub>d</sub> = Design Superelevation Rate  
L<sub>r</sub> = Min. Runoff Length, 2-Lane Highway Rotated  
About the Centerline, Lane Width of 12 feet

# MAXIMUM GRADES (PERCENT)

## 203-1

REFERENCE SECTION  
203.2.3

	FUNCTIONAL CLASSIFICATION	TERRAIN	DESIGN SPEED (mph)										
			25	30	35	40	45	50	55	60	65	70	75
URBAN	Interstate, Other Freeways and Expressways <sup>(A)</sup>	LEVEL						4	4	3	3	3	3
		ROLLING						5	5	4	4	4	4
		HILLY						6	6	6	5	5	
	ARTERIAL STREET	LEVEL	7	7	7	7	6	6	5	5			
		ROLLING	10	9	8	8	7	7	6	6			
		HILLY	12	11	10	10	9	9	8	8			
	COLLECTOR <sup>(B)</sup> STREETS	LEVEL	9	9	9	9	8	7	7	6			
		ROLLING	12	11	10	10	9	8	8	7			
		HILLY	13	12	12	12	11	10	10	9			
	LOCAL STREETS	LEVEL	10	9	9	9	9	8	8	7			
		ROLLING	13	12	12	11	11	10	10	8			
		HILLY	15	15	15	14	14	12	12	10			
RURAL	Interstate, Other Freeways and Expressways <sup>(A)</sup>	LEVEL						4	4	3	3	3	3
		ROLLING						5	5	4	4	4	4
		HILLY						6	6	6	5	5	
	ARTERIAL STREET	LEVEL	5	5	5	5	5	4	4	3	3	3	
		ROLLING	8	7	7	6	6	5	5	4	4	4	
		HILLY	9	8	8	8	7	7	6	6	5	5	
	COLLECTOR <sup>(B)</sup> STREETS	LEVEL	7	7	7	7	7	6	6	5			
		ROLLING	10	9	9	8	8	7	7	6			
		HILLY	11	10	10	10	10	9	9	8			
	LOCAL STREETS	LEVEL	7	7	7	7	7	6	6	5			
		ROLLING	11	10	10	10	9	8	7	6			
		HILLY	15	14	14	13	12	10	10				

(A) Grades 1% steeper may be used where development in urban areas precludes the use of flatter grades. Grades 1% steeper may also be used for one-way down-grades, except in hilly terrain.

(B) Grades 2% steeper may be used for short lengths (less than 500 ft.), on one-way down-grades, and on low-volume rural collectors with current AADT less than 2,000 veh/day.

# **MAXIMUM CHANGE IN VERTICAL ALIGNMENT WITHOUT VERTICAL CURVE**

**203-2**

REFERENCE SECTION  
203.3.2

DESIGN SPEED (mph)	MAX. GRADE CHANGE $\Delta$
25	1.85%
30	1.30%
35	0.95%
40	0.75%
45	0.55%
50	0.45%
55	0.40%
60	0.30%
65	0.30%
70	0.25%
75	0.20%

Based on the AASHTO comfort formula for sag vertical curves:

$$A = 46.5 L / V^2 = 1162.5 / V^2$$

Where:

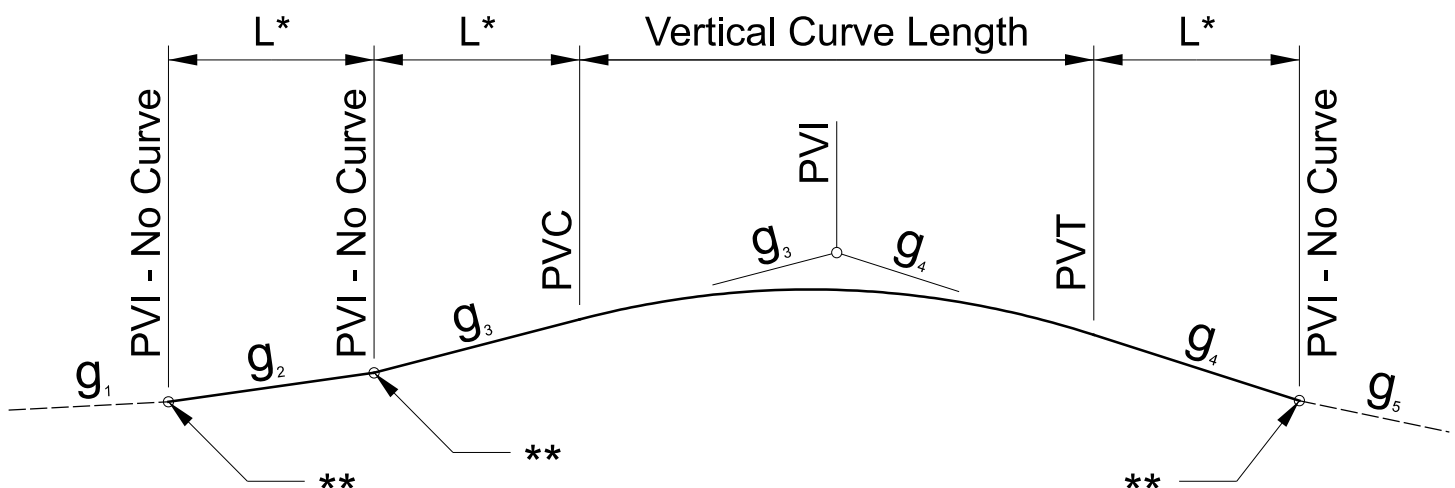
A = Maximum Grade Change (%)

L = Length of Vertical Curve  
(assume 25')

V = Design Speed (mph)

$\Delta$  ROUNDED TO NEAREST 0.05%

## **RELATIONSHIP BETWEEN VERTICAL CURVES AND GRADE BREAKS**



\* The minimum distance between consecutive deflections is:

100' where design speed is 50 mph or greater

50' where design speed is less than 50 mph

\*\* Allowable grade break location.

# CREST VERTICAL CURVES

## 203-3

REFERENCE SECTION

203.3.3

HEIGHT OF EYE 3.50'

-

HEIGHT OF OBJECT 2.00'

DESIGN SPEED	DESIGN SSD	DESIGN K
20	115	7
21	120	7
22	130	8
23	140	10
24	145	10
25	155	12
26	165	13
27	170	14
28	180	15
29	190	17
30	200	19
31	210	21
32	220	23
33	230	25
34	240	27
35	250	29
36	260	32
37	270	34
38	280	37
39	290	39
40	305	44
41	315	46
42	325	49
43	340	54
44	350	57
45	360	61
46	375	66
47	385	69

DESIGN SPEED	DESIGN SSD	DESIGN K
48	400	75
49	415	80
50	425	84
51	440	90
52	455	96
53	465	101
54	480	107
55	495	114
56	510	121
57	525	128
58	540	136
59	555	143
60	570	151
61	585	159
62	600	167
63	615	176
64	630	184
65	645	193
66	665	205
67	680	215
68	695	224
69	715	237
70	730	247
71	745	257
72	765	271
73	780	282
74	800	297
75	820	312

Using: S = Stopping Sight Distance, ft.

L = Length of Crest Vertical Curve, ft.

A = Algebraic Difference in Grades (%), Absolute Value

K = Rate of Vertical Curvature

- For a given design speed and an "A" value, the calculated length "L" =  $K \times A$
- To determine "S" with a given "L" and "A", use the following:

For  $S < L$ :  $S = 46.45 \sqrt{K}$ , where  $K = L/A$

For  $S > L$ :  $S = 1079/A + L/2$

# SAG VERTICAL CURVES

## 203-6

REFERENCE SECTION

201.2.2 & 203.3.4

HEIGHT OF HEADLIGHT = 2.00'

DESIGN SPEED	DESIGN SSD	DESIGN K
20	115	17
21	120	18
22	130	20
23	140	22
24	145	24
25	155	26
26	165	28
27	170	29
28	180	32
29	190	34
30	200	37
31	210	39
32	220	42
33	230	44
34	240	47
35	250	49
36	260	52
37	270	55
38	280	57
39	290	60
40	305	64
41	315	66
42	325	69
43	340	73
44	350	76
45	360	79
46	375	83
47	385	85

UPWARD LIGHT BEAM DIVERGENCE = 1° 00'

DESIGN SPEED	DESIGN SSD	DESIGN K
48	400	89
49	415	93
50	425	96
51	440	100
52	455	104
53	465	107
54	480	111
55	495	115
56	510	119
57	525	123
58	540	128
59	555	132
60	570	136
61	585	140
62	600	144
63	615	148
64	630	153
65	645	157
66	665	162
67	680	167
68	695	171
69	715	176
70	730	181
71	745	185
72	765	190
73	780	194
74	800	200
75	820	206

Using: S = Stopping Sight Distance

L = Length of Sag Vertical Curve

A = Algebraic Difference in Grades (%), Absolute Value

K = Rate of Vertical Curvature

- For a given design speed and an "A" value, the calculated length "L" = K x A
- To determine "S" with a given "L" and "A", use the following:

$$\text{For } S < L: S = \frac{3.5L + \sqrt{12.25L^2 + 1600AL}}{2A}$$

$$\text{For } S > L: S = (AL + 400)/(2A - 3.5)$$

Note: When the algebraic difference, A, is 1.75% or less, SSD is not restricted by the vertical curve.

OCTOBER 2010

# RURAL LANE WIDTHS <sup>(A)</sup>

**301-2**

REFERENCE SECTIONS  
301.1.2

Functional Classification	Traffic	Minimum Lane Widths (ft.)										
	Design Year ADT	Design Speed (mph)										
		20	25	30	35	40	45	50	55	60	65	70 or >
Interstate, Other Freeways, and Expressways	ALL	--	--	--	--	--	--	12	12	12	12	12
Arterial	> 2000	--	--	--	--	12	12	12	12	12	12	12
	400 to 2000	--	--	--	--	11	11	11	12	12	12	12
	< 400	--	--	--	--	10	10	11	11	11	11	11
Collector	> 2000	11	11	11	11	11	11	11	11 <sup>(C)</sup>	11 <sup>(C)</sup>	--	--
	400 to 2000	10	10	10	11	11	11	11	11	11	11	--
	< 400	10	10	10	10	10	10	10	11	11	11	--
Local	> 2000	11	11	11	11	11	11	11	11 <sup>(C)</sup>	11 <sup>(C)</sup>	--	--
	400 to 2000	10	10	10	10	10	11	11	11	11	--	--
	< 400	9	9	9	9	9	10	10	11	11	--	--

## NOTES:

- (A) There may be some rural locations that are urban in character. An example would be a village where adjacent development and other conditions resemble and urban area. In such cases, urban design criteria (Figure 301-4) may be used.
- (B) The number of lanes should be determined by a capacity analysis.
- (C) Consider using a 12' lane width where substantial truck volumes are present or agricultural equipment frequently use the road.
- (D) For National Network lane width requirements, see Section 105.3

Note: For the design criteria pertaining to Collectors and Local Roads with ADT's of 2000 or less, refer to the **AASHTO publication Guidelines for Geometric Design of Low-Volume Roads (2nd Edition 2019)**

RURAL SHOULDER CRITERIA	301-3
	REFERENCE SECTIONS 301.2.2, 301.2.3, 307.2.3, & 602.1.1

Functional Classification	Traffic	Graded Width			Treated Width	Type (I)	Rounding (K)		Guardrail Offset (From Traveled Way)
	Design Year ADT	With Barrier	Without Barrier and Foreslope Steeper than 6:1	Without Barrier 6:1 or Flatter Foreslope			Design Speed		
							≥ 50	< 50	
Interstate, Other Freeways, & Expressways (Q)	ALL	15' Rt. 9' Med. (B)(P)	15' Rt. 9' Med. (B)	10' Rt. 4' Med. (D)	10' Rt. (C) (R) 4' Med. (D)	Paved	10'	--	(L) (G)
Arterial (N)	>2000	13' (P)	12'	8'	(A) 8'	PVD (O)	8'	4'	10' (G)
	1501 to 2000	11' (P)	10'	6'	6'	PVD (O)	8'	4'	8' (G)
	400 to 1500	11' (P)	10'	6'	6'	PVD (O)	4'	4'	8' (G)
	< 400	9' (P)	8'	4'	4'	PVD (O)	4'	4'	6' (G)
Collector (N)	>2000	11' (P)	10'	8'	6'	SRF. TRT. (J)	8'	4'	8' (M)
	1501 to 2000	9' (P)	8'	6' (E)	4'	AGG. BASE	8'	4'	6' (M)
	400 to 1500	7' (P)	6'	5'	4'	AGG. BASE	4'	4'	4'
	< 400	7' (P)	6'	(F)	(F)	AGG. BASE	4'	4'	4'
Local	>2000	11' (P)(H)	10' (H)	8' (H)	4'	SRF. TRT. (J)	8'	4'	8' (M)
	1501 to 2000	9' (P)	8'	6' (E)	4'	AGG. BASE	8'	4'	6' (M)
	400 to 1500	7' (P)	6'	5'	4'	AGG. BASE	4'	4'	4'
	< 400	7' (P)	6'	(F)	(F)	AGG. BASE	4'	4'	4'

(A) 4' provided to mimic the existing condition. Graded shoulder width has been met --> no DE required.

See the following sheet for corresponding notes.

### Notes to Figure 301-3: Rural Shoulder Criteria

- (A) There may be rural locations that are urban in character. An example would be a village where adjacent development and other conditions resemble an urban area. In such cases, urban design criteria (**Figure 301-4**) may be used.
- (B) If 6 or more lanes, use 15 ft.
- (C) Where truck traffic exceeds 250 DDHV, additional shoulder width may be beneficial. IF the treated shoulder width is increased then the graded shoulder width should be increased by the same amount.
- (D) If 6 or more lanes, use 10 ft. See note (R).
- (E) A 6-ft. turf shoulder may be used with a 4:1 or flatter foreslope.
- (F) See AASHTO's 2019 Guidelines for Geometric Design Low-Volume Roads 2<sup>nd</sup> Edition for values.
- (G) Concrete barrier may be placed at the edge of treated shoulder when used in lieu of guardrail.
- (H) An 8-ft. graded shoulder may be used with a 4:1 or flatter foreslope.
- (I) Turf shoulders may be used on non-state maintained roads at option of local government if current year ADT includes less than 250 B and C truck units. Turf shoulders are not to be used on State maintained roads.
- (J) **On state maintained roads, the treatment is based on the number of B and C unit trucks in the design year ADT. Refer to PDM Figures 303-1 & 403-1 for aggregate and surface treated shoulder build ups. Less than 250 trucks, aggregate base may be used. 250 to 500 trucks, surface treated aggregate base (single layer) may be used. Greater than 500 to 1000 trucks, surface treated on two layers of aggregate base may be used. Over 1000 trucks, paved shoulders are recommended.**
- (K) Rounding should be 4-ft. where the foreslope begins beyond the clear zone or where guardrail is installed and foreslope is steeper than 6:1. No rounding is required when the foreslope is 6:1 or flatter.
- (L) Guardrail offset is treated width plus 2-ft.
- (M) Whenever a design exception is approved for graded shoulder width, the guardrail offset may be reduced but shall not be less than 4-ft.
- (N) The median and right shoulder width criteria for Interstates, other freeways, and expressways shall apply to the shoulders of divided arterials and divided collectors.
- (O) A fully paved shoulder is preferred, but may not be economically feasible. Therefore, a minimum 2-ft. of the treated shoulder should be paved. The remainder of the treated shoulder may be either **aggregate shoulder or surface treated** according to the criteria stipulated in Note (J). If pedestrians or bicyclists are known to be frequent users, a fully paved shoulder should be provided.
- (P) Total Graded Width may be reduced as much as 3-ft. where MGS guardrail with the longer posts is used. See Section 603.1.2 and SCD MGS-1.1 for post length and position details.
- (Q) Paved shoulder width reductions of less than 2-ft. at sign or luminaire foundations or bridge piers will not require a design exception. The 4-ft. minimum lateral clearance must still be provided.
- (R) Prior to the January 2017 update of L&D Manual Vol. 1, a 12-ft. shoulder width was the standard. A 12-ft. shoulder width may be retained or perpetuated, if desired.

Note: For the design criteria pertaining to Collectors and Local Roads with ADT's of 2000 or less, refer to the **AASHTO publication Guidelines for Geometric Design of Low-Volume Roads (2<sup>nd</sup> Edition 2019)**



# CLEAR ZONE WIDTHS

600-1

REFERENCE SECTIONS  
600.2

Design Speed	Design ADT	Foreslope		Backslope		
		6:1 or Flatter	Steeper than 6:1 to 4:1	6:1 or Flatter	Steeper than 6:1 to 4:1	Steeper than 4:1
40 mph or less	<750	8 ft	8 ft	8 ft	8 ft	8 ft
	750-1500	11	13	11	11	11
	1501-6000	13	15	13	13	13
	>6000	15	17	15	15	15
45-50 mph	<750	11	13	11	9	9
	750-1500	13	18	15	13	11
	1501-6000	17	23	17	15	13
	>6000	19	26	21	19	15
55 mph	<750	13	16	11	11	9
	750-1500	17	22	17	15	11
	1501-6000	21	27	21	17	15
	>6000	23	29	23	21	17
60 mph	<750	17	22	15	13	11
	750-1500	22	29	21	17	13
	1501-6000	28	36*	25	21	16
	>6000	31*	40*	27	25	21
65-70 mph	<750	19	23	15	15	11
	750-1500	25	32*	21	19	14
	1501-6000	30	38*	27	23	18
	>6000	32*	42*	28	28	23

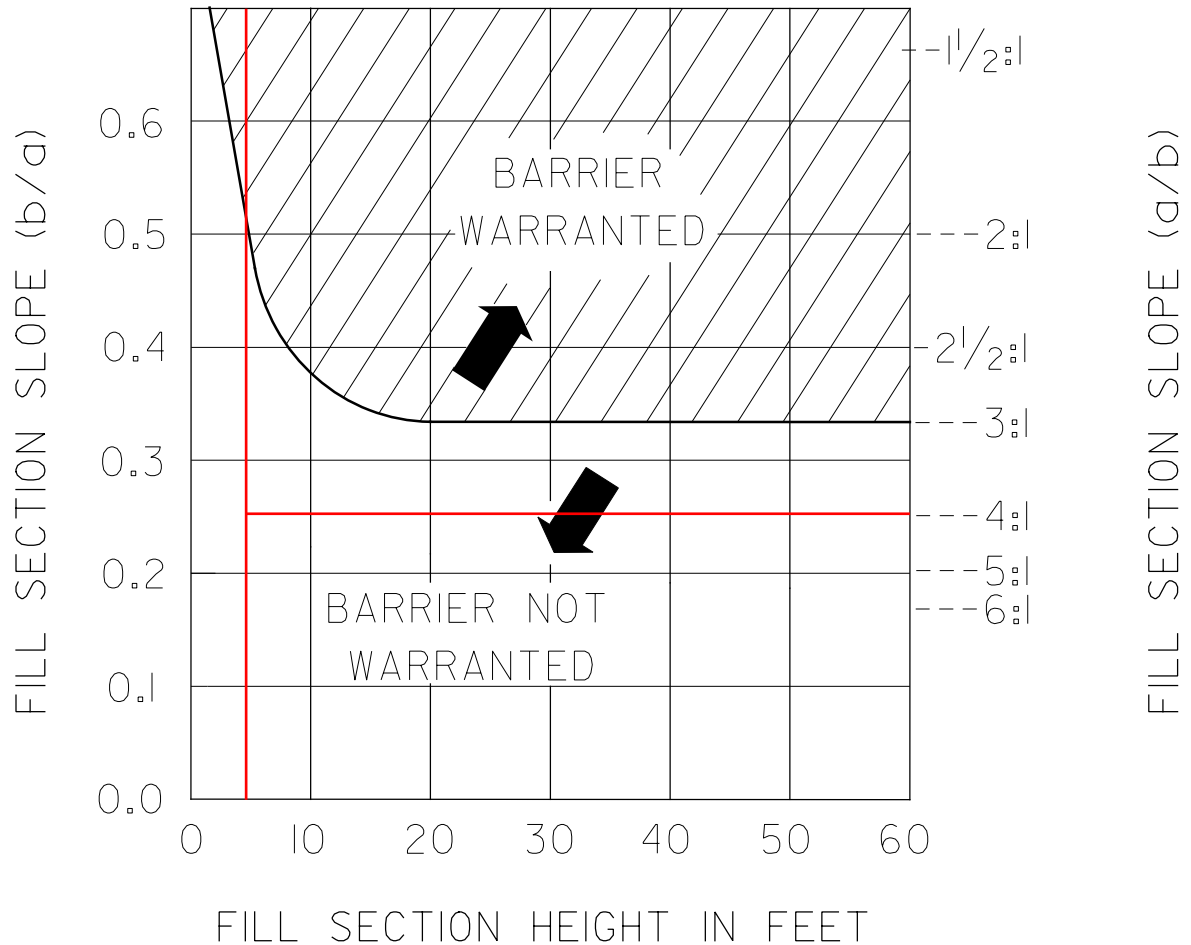
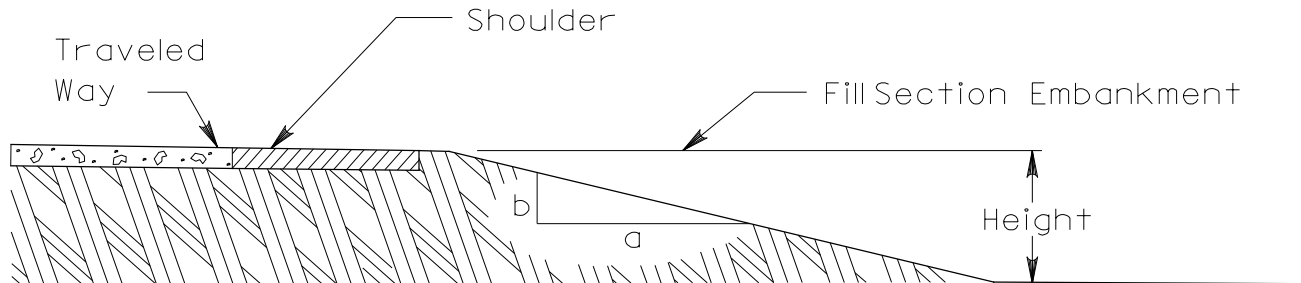
\* Use a **maximum clear zone** of 30 feet unless a site-specific investigation or accident history indicates a high potential of continuing accidents. When the potential for continuing accidents is high, the widths in the above chart should be multiplied by the following curve correction factors to extend the clear zone on the outside of curves having a Degree of Curvature of 2 degrees or sharper.

Degree of Curvature	HORIZONTAL CURVE CORRECTION FACTORS						
	Design Speed (mph)						
	40	45	50	55	60	65	70
2.0	1.1	1.1	1.1	1.2	1.2	1.2	1.3
2.5	1.1	1.1	1.2	1.2	1.2	1.3	1.3
3.0	1.1	1.2	1.2	1.2	1.3	1.3	1.4
3.5	1.1	1.2	1.2	1.3	1.3	1.4	1.5
4.0	1.2	1.2	1.2	1.3	1.4	1.4	
4.5	1.2	1.2	1.3	1.3	1.4	1.5	
5.0	1.2	1.2	1.3	1.4	1.5		
6.0	1.2	1.3	1.4	1.4	1.5		
7.0	1.3	1.3	1.4	1.5			
8.0	1.3	1.4	1.5				
9.0	1.3	1.4	1.5				
10.0	1.4	1.5					
15.0	1.5						

# BARRIER WARRANTS FOR EMBANKMENTS

601-1

REFERENCE SECTIONS  
601.1.2

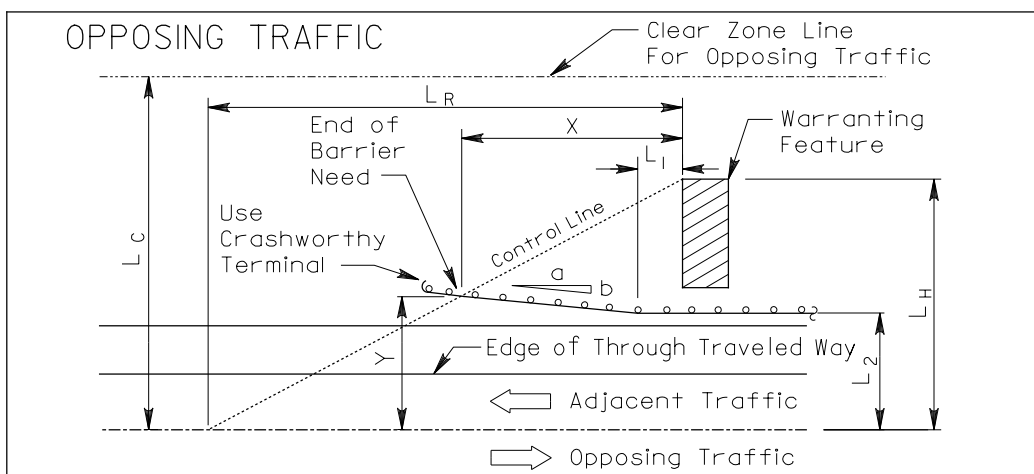
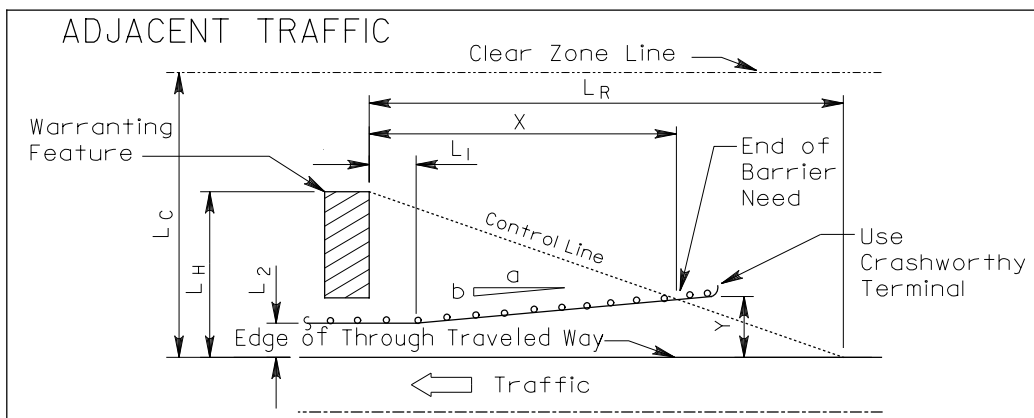


On or below the curve barrier is not warranted for embankment. However, check barrier need for other roadside hazards within the clear zone.

# BARRIER LENGTH OF NEED (TANGENT ALIGNMENT)

602-1

REFERENCE SECTIONS  
602.1.2, 602.5.1, & 603.6



Design Speed (mph)	Flare Rate (a:b)		Runout Length, $L_R$ (ft) Per Design Year ADT				Formulas
	Concrete Barrier	MCS Guardrail	Over 10,000 veh/day	5,000-10,000 veh/day	1,000-5,000 veh/day	Under 1,000 veh/day	
75	20:1	7:1	415	380	335	290	<p> <math>X</math> = Length of Need  <math>L_R</math> = Runout Length  <math>L_C</math> = Required Clear Zone  <math>L_H</math> = Lateral Offset to Back of Warranting Feature  <math>L_2</math> = Lateral Offset to Face of Barrier (see Figure 301-3)  <math>L_1</math> = Varies (Typically measured to the end of a full panel of guardrail)              If <math>L_H &lt; L_C</math>: <math>X = \frac{L_H + (b/a)L_1 - L_2}{(b/a) + L_H/L_R}</math>  <math>Y = L_H - X(L_H/L_R)</math>              If <math>L_H &gt; L_C</math>: Substitute <math>L_C</math> in the above formulas.         </p>
70	20:1	7:1	360	330	290	250	
65	19:1	7:1	330	290	250	225	
60	18:1	7:1	300	250	210	200	
55	16:1	7:1	265	220	185	175	
50	14:1	7:1	230	190	160	150	
45	12:1	7:1	195	160	135	130	
40	10:1	7:1	160	130	110	100	
35	9:1	7:1	135	110	95	85	
30	8:1	7:1	110	90	80	70	

LON Calculations N/A
-------------------------

# UTILITIES AFFECTED

Geneva Telephone Company; Geneva, Ohio  
Cleveland Electric Illuminating Company; Ashtabula, Ohio

Field Book No. 162

# TYPICAL SECTIONS TYPE T-35 ON B-19

SCALE  $\frac{3}{8}" = 1'-0"$

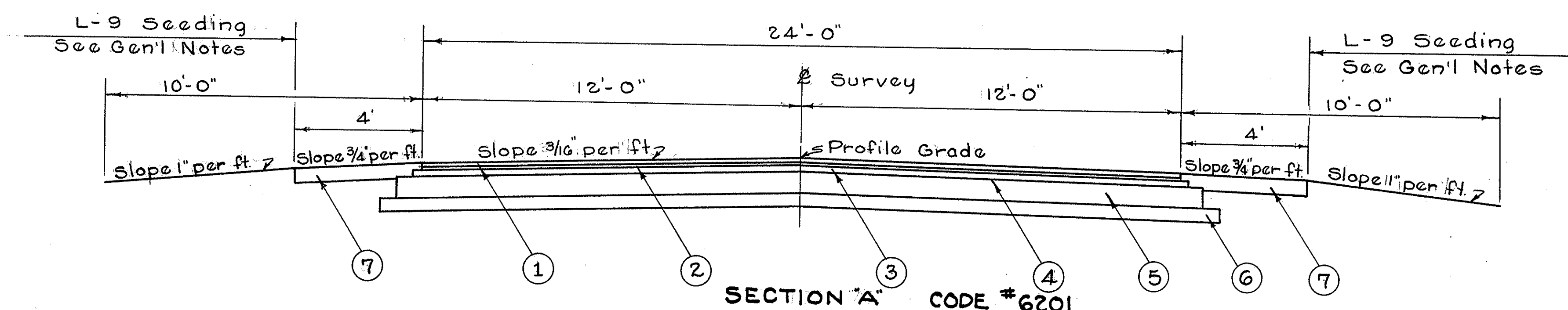
DESIGN SPEED 60 M.P.H.

NOTE: For details of berms & ditches, see Std. Dwg. RI-1

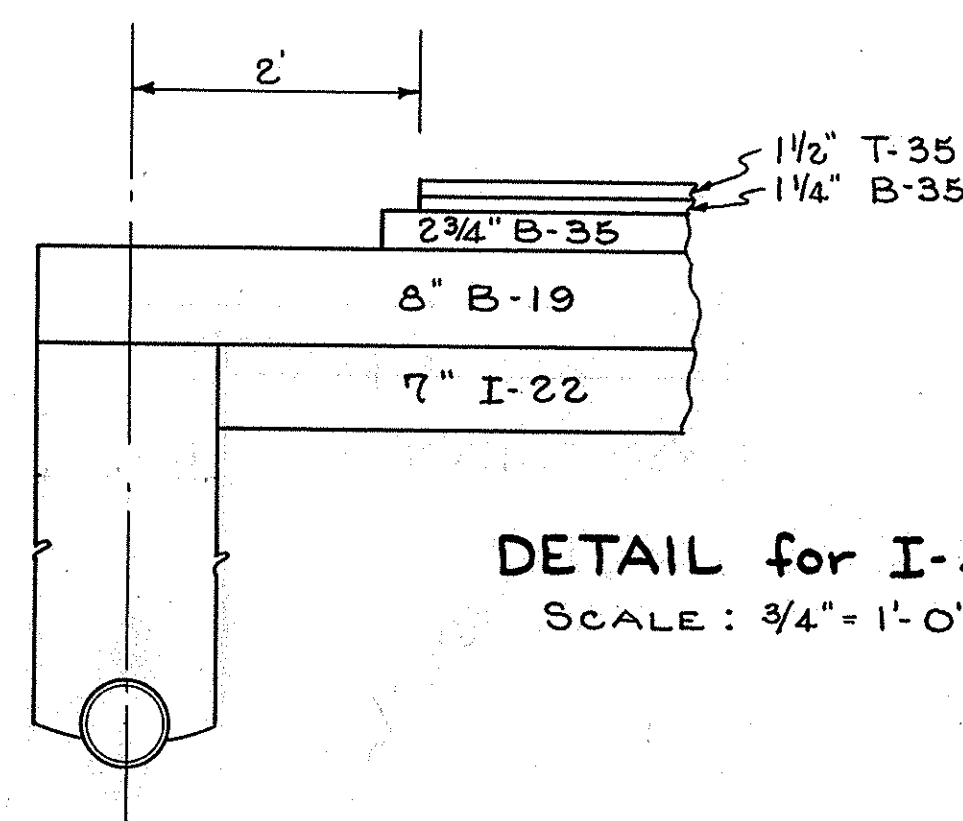
FED. RD. DIVISION	STATE	PROJECT
2	OHIO	

2  
34

ATB-45-17.07



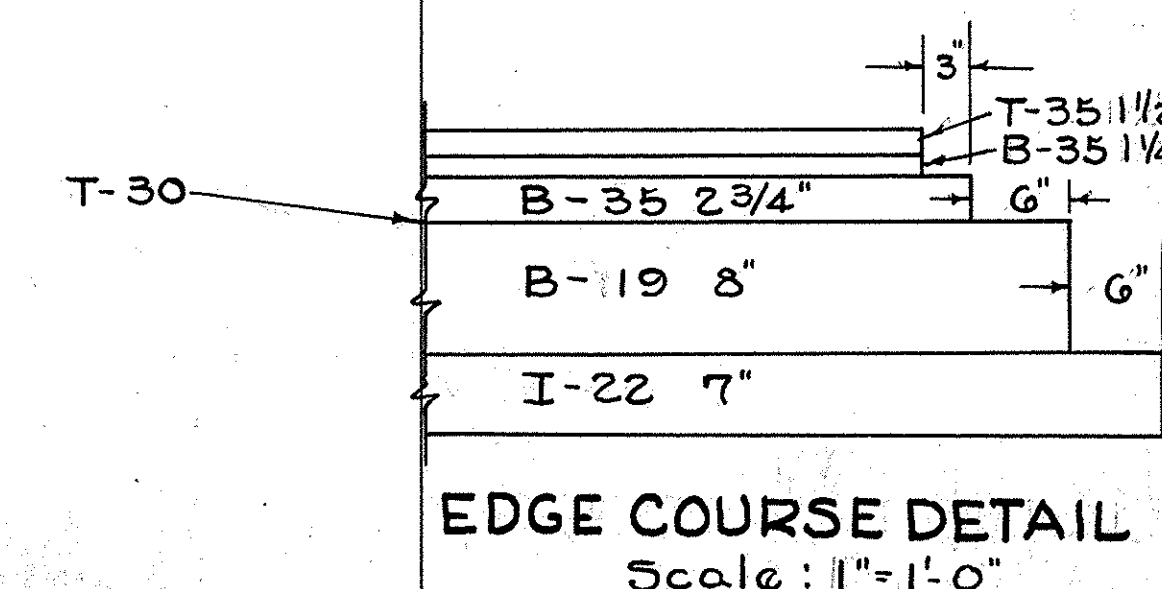
From	To	L.F.	L.F.	Description
894+00	909+76		1576	
909+76	911+12	136		Bridge & Apprs.
911+12	936+00		2488	
936+00	937+00	100		Vertical Transition
TOTALS		236	4064	



\* Note: Aggregate surfaced shoulders shall be stabilized by a mixture of  $\frac{1}{2}$  lbs. per sq. yard of Calcium Chloride to the upper 3 inches of the compacted aggregate. The Calcium Chloride shall be thoroughly mixed with the stabilized aggregate as described in Item B-11.12 of the General Specifications. After final shaping and compaction of the shoulders the surface shall be given an additional application of Calcium Chloride at the rate of 0.6 lbs. per square yard as described in Item B-11.14 of the General Specifications. See note in Proposal.

## LEGEND

- ① T-35  $\frac{1}{2}"$  Asphaltic Concrete Surface Course, Type "A" (70-85)
- ② B-35  $\frac{1}{4}"$  Asphaltic Concrete Leveling Course (70-85)
- ③ B-35  $\frac{2}{4}"$  Asphaltic Concrete Base Course (70-85)
- ④ T-30 Bituminous Prime Coat, Sec. M-5.3, MC-0 or MC-1 or Sec. M-5.7, RT-2 or RT-3 at 0.35 gal. per sq. yd.
- ⑤ B-19 8" Aggregate Base Course
- ⑥ I-22 7" Subbase (Granulated Slag, Sec. M-3.13 may be used for this item)
- \* ⑦ I-18 6" Stabilized Crushed Aggregate Shoulders and Approaches





Simplified Pavement Designs for Short* Projects															
Pavement Composition	Pavement Course Thicknesses														
	Number of Trucks in Opening Day ADT (ADT x T24)														
	<=10		11-25		26-50		51-100		101-200		201-400		401-800		>800
	in	mm	in	mm	in	mm	in	mm	in	mm	in	mm	in	mm	
<b>Flexible Design</b>															
441 AC Surface, Type 1, (449), PG64-22**	1.25	32	3	75	3	75	3	75	3	75	3	75	3	75	n/a
301 Asphalt Concrete Base, (449), PG64-22	4	100	4	100	5	125	6	150	7	180	8	200	9	230	n/a
304 Aggregate Base	6	150	6	150	6	150	6	150	6	150	6	150	6	150	n/a
<b>Alternate Flexible Design</b>															
441 AC Surface, Type 1, (449), PG64-22**	3	75	-	-	-	-	-	-	-	-	-	-	-	-	n/a
304 Aggregate Base	12	300	-	-	-	-	-	-	-	-	-	-	-	-	n/a
<b>Rigid Design</b>															
452 Non-Reinforced Concrete Pavement, Class QC 1P	7***	180	7***	180	7***	180	7***	180	8	210	9	230	10	260	n/a
304 Aggregate Base	6	150	6	150	6	150	6	150	6	150	6	150	6	150	n/a

\* Less than 300 linear feet (100 m) of total pavement replacement.

\*\* Include a plan note restricting the 441 to 2-inch (50 mm) maximum lift thickness.

\*\*\* 7-inch (180 mm) concrete is allowed for short projects only. All other projects require 8-inch (200 mm) minimum in accordance with Section 302.

# Asphalt Concrete Quick Reference Guide

Page 1

**406-1**

January 2024

Reference Section

**406**

Item	Minimum Lift	Maximum Lift	Taper to 0"	Uniform Thickness Required
<b>301 Asphalt Concrete Base (449)</b> [Two Lifts]	<b>3"</b>	<b>6"</b>	<b>No</b>	<b>No</b>
302 Asphalt Concrete Base (449)	4"	7.75"	No	No
424 Fine Graded Polymer Asphalt Concrete, Type A (449)	0.625" (5/8")	1"	No	Yes
424 Fine Graded Polymer Asphalt Concrete, Type B (448 & 449)	0.75"	1.25"	No	Yes
441 AC Surface Course, Type 1 (446)	1.25"	1.5"	No	Yes
<b>441 AC Surface Course, Type 1 (448)</b>	1.25"	1.5"	No	Yes
<b>441 AC Surface Course, Type 1 (449)</b> [Two Lifts]	<b>1.25"</b>	<b>1.5"</b>	<b>No</b>	<b>No</b>
<b>441 AC Intermediate Course, Type 1 (448)</b>	1"	1.5"	No	Yes
441 AC Intermediate Course, Type 1 (449)	1"	1.5"	Yes	No
<b>441 AC Intermediate Course, Type 2 (446 &amp; 448)</b>	1.75"	3"	No	Yes
441 AC Intermediate Course, Type 2 (449)	1.75"	3"	Yes	No
442 AC Surface Course, 9.5mm, Type A or B (446 & 447)	1.25"	1.5"	No	Yes
442 AC Surface Course, 9.5mm, Type A or B (448)	1.25"	1.5"	No	Yes
442 AC Surface Course, 9.5mm, Type A or B (449)	1.25"	1.5"	No	No
<b>442 AC Surface Course, 12.5mm, Type A or B (446, 447 &amp; 448)</b>	1.5"	2.5"	No	Yes
442 AC Surface Course, 12.5mm, Type A or B (449)	1.5"	2.5"	No	No
<b>442 AC Intermediate Course, 19mm, Type A or B (446 &amp; 448)</b>	2.25"	3.75"	No	Yes
442 AC Intermediate Course, 19mm, Type A or B (449)	2.25"	3.75"	Yes	No
<b>442 AC Intermediate Course, 12.5mm, Type A or B (446 &amp; 448)</b>	1.5"	2.5"	No	Yes
442 AC Intermediate Course, 12.5mm, Type A or B (449)	1.5"	2.5"	Yes	No
442 AC Intermediate Course, 9.5mm, Type A or B (448)	1"	1.5"	No	Yes
442 AC Intermediate Course, 9.5mm, Type A or B (449)	1"	1.5"	Yes	No
443 Stone Matrix Asphalt Concrete, 12.5mm (446)	1.5"	2"	No	Yes

Items in **bold** indicate the most commonly used surface and intermediate courses.

low chord clear the water surface profile of the flood produced by the design AEP storm discharge. These clearances may be reduced where a cost comparison of alternatives shows that a reduction in clearance will result in significant savings. Consider future flood related costs relative to highway operation, maintenance, and repair; highway-aggravated flood damage to other property; and for additional or interrupted highway travel.

Flood clearances may also be reduced to protect important ecological resources as identified in the environmental documentation.

### 1004.2 Design AEP Storm

Use the AEP storm for the design as specified below:

- Interstates, Freeways & Expressways...2% AEP
- Other Highways (3000 ADT and over) and Freeway Ramps.....4% AEP
- Other Highways (under 3000 ADT)....10% AEP
- \*Bicycle Pathway.....20% AEP

\* Unless otherwise approved by OHE.

## 1005 Highway Encroachments on Floodplains

### 1005.1 General

Design all highways that encroach on floodplains, bodies of water or streams to allow conveyance of the 1% AEP storm discharge without causing significant damage to the highway, watercourse, body of water or other property.

Hydraulically design structures and/or channels to carry the design AEP storm discharge. Confirm the structure and/or channel will carry the 1% AEP check storm discharge without causing property damage. Inundation of the highway is acceptable for the 1% AEP discharge, but it is not permitted for the design AEP discharge. Water surface elevations caused by existing structures do not have to be lowered to meet the 1% AEP discharge.

#### 1005.1.1 Flood Data and Flood Insurance Study

Special consideration must be given when designing a structure located within a reach of channel that is part of an FIS. Perform a step

Equivalence between the two can be seen below.

AEP	Recurrence Interval
50%	2 year
20%	5 year
10%	10 year
4%	25 year
2%	50 year
1%	100 year
0.2%	500 year

See Glossary of Terms for the definition of AEP.

### C1004.2

Code of Federal Regulations 23 CFR 650.115(a)(2) requires interstate highways to be provided with protection from the 2% AEP flood event.

Other roadway design AEP floods are based on the class of highway, or the level of urbanization and development.

#### C1005.1.1

The floodway is the channel of a watercourse and the adjacent land areas that must be reserved in order to discharge the 1% AEP flood, or base flood,



## **1005.2 Type of Studies**

### **1005.2.1 Hazard Evaluation for Watercourses W/O A Defined FEMA SFHA**

A Flood Hazard Evaluation is required for all watercourse involvements except for FEMA Zones A, AE and A1-A30, or where roadway culverts are provided to satisfy minimum size requirements. Perform the following for a flood hazard evaluation:

1. Determine the water surface elevation of the design AEP and 1% AEP flood.
2. Delineate the inundation area for the peak water surface elevation for the design AEP and 1% AEP flood on a topographic map or a digital map.
3. Evaluate the impacts of any increase in the flooding limits.

### **1005.2.2 Detailed Study**

If the Hazard Evaluation indicates a significant increase in the flooding of upstream property, a Detailed Study is required. Furnish a Detailed Study in highly urbanized areas where the potential for flooding cannot be accurately assessed without an analysis of the entire floodplain. For prefabricated structures, the Detailed Study, including a step-backwater analysis, will be authorized after review of the Hazard Evaluation by OHE.

### **C1005.2.1**

A Flood Hazard Evaluation is a condition statement regarding the nature of the upstream area, the extent of upstream flooding, and whether buildings are in the 1% AEP floodplain.

## **1006 Allowable Headwater**

### **1006.1 Design AEP Storm**

Use the design AEP storm as shown in Section 1004.2.

### **1006.2 Culvert Headwater Controls**

#### **1006.2.1 Design Storm Controls**

Headwater depth for all culverts (Type A Conduits) must not exceed any of the following controls for the design storm:

- A. 2 feet below the near, low edge of the pavement for drainage areas 1000 acres or greater and 1 foot below for culverts draining less than 1000 acres.
- B. 2 feet above the inlet crown of the culvert or

above a tailwater elevation that submerges the inlet crown in flat terrain.

- C. 4 feet above the inlet crown of a culvert in a deep ravine.
- D. 1 foot below the near edge of pavement for bicycle pathways.

### 1006.2.2 Check Storm Controls

Headwater depth for all culverts (Type A Conduits) must not exceed any of the following controls for the applicable check storm.

- A. 2 feet below the lowest ground elevation adjacent to an occupied building for a 2% AEP storm. This is not intended to lower existing high-water elevations around buildings.
- B. Limit the maximum 1% AEP storm headwater depth to twice the diameter or rise of the culvert.
- C. Size a replacement structure to prevent overtopping by the 1% AEP storm where overtopping would not occur with the existing structure.
- D. Size a replacement structure so that flooding of upstream land is not increased for the 1% AEP storm when compared to the existing structure. Before implementing this criteria consider the type of upstream property and land use.
- E. Controls Specific to an FIS. See section 1006.4.

### 1006.2.3 Limitations

1006.2.1 A is typically the primary headwater control. 1006.2.1 B and C are secondary headwater controls.

The near low edge of **the traveled way is the lowest edge of the traveled way** elevation located within the drainage divide. This may or may not be located directly over the culvert. If the overtopping elevation point on the roadway is outside the drainage divide, use the ditch break elevation as a headwater control in lieu of 1006.2.1 A.

Use smooth pipe when 1006.2.1 B is applicable to establish the allowable headwater. Use corrugated pipe when 1006.2.1 C is applicable to establish the allowable headwater. Use these established headwater elevations in the design of conduit alternates.

Provide a free water surface through structures

### C1006.2.3

In general, a reduction in waterway opening from existing to proposed is discouraged. Consideration can be given to reducing the waterway opening if it does not cause flooding damage upstream or excessive outlet velocity. There are times the hydrology can be questionable so maintaining the same waterway opening as the existing is recommended.

A culvert on a flat grade or one that acts as an equalizer pipe that experiences frequent tailwater conditions may fit the criteria of 1006.2.1 C for determining allowable headwaters.

with a span greater than or equal to 10 feet for the design storm, unless tailwater controls.

### **1006.3 Bridge Headwater Control**

Evaluate the headwater generated by a bridge in accordance to a flood hazard evaluation. Meet the following:

- A. Match the existing headwater for a bridge replacement for the design storm and the 1% AEP check storm to the maximum extent practicable. If there is an increase in headwater, determine the upstream impacts.
- B. The design storm does not contact the low chord for new structures on new alignment.
- C. Regulations from the local Conservancy Districts apply if they are more restrictive than the Department's.
- D. Controls specific to an FIS. See section 1006.4.

### **1006.4 Controls Specific to Flood Insurance Studies**

When making an encroachment on a NFIP designated floodplain in the floodway fringe, the rise in the water surface above the natural 1% AEP flood elevation is limited by the community. Contact the Local Floodplain Coordinator early in the design process to determine the allowable headwater increase. A current list of Floodplain Coordinators may be found here: [Floodplain Coordinator List](#)

No increase in the Base Flood Elevation is preferred when encroaching on a NFIP designated floodway. When an increase is necessary, approval from the Department, coordination with the Locals/FEMA and a NFIP FIRM revision are required.

## **1007 Pipe Removal Criteria**

### **1007.1 General**

Use the following guidelines to determine whether an existing pipe, regardless of type, being taken out of service is to be abandoned, filled and plugged, or removed.

- A. Pipes less than 4 inches in diameter may be abandoned in place when below the pavement subgrade.
- B. Remove or fill and plug pipes 4 inches through

### **C1006.4**

Initiate the flood map revision process as soon as possible if changes to the NFIP FIRM will occur because of an encroachment on the floodway or floodway fringe. Submit a CLOMR to FEMA for approval. After construction, a LOMR officially revises the FIRM. The most common cause of change is an increase in the BFE from fill or obstructions added to the floodplain.

FEMA provides guidance on the [Flood Map Revision Process](#).

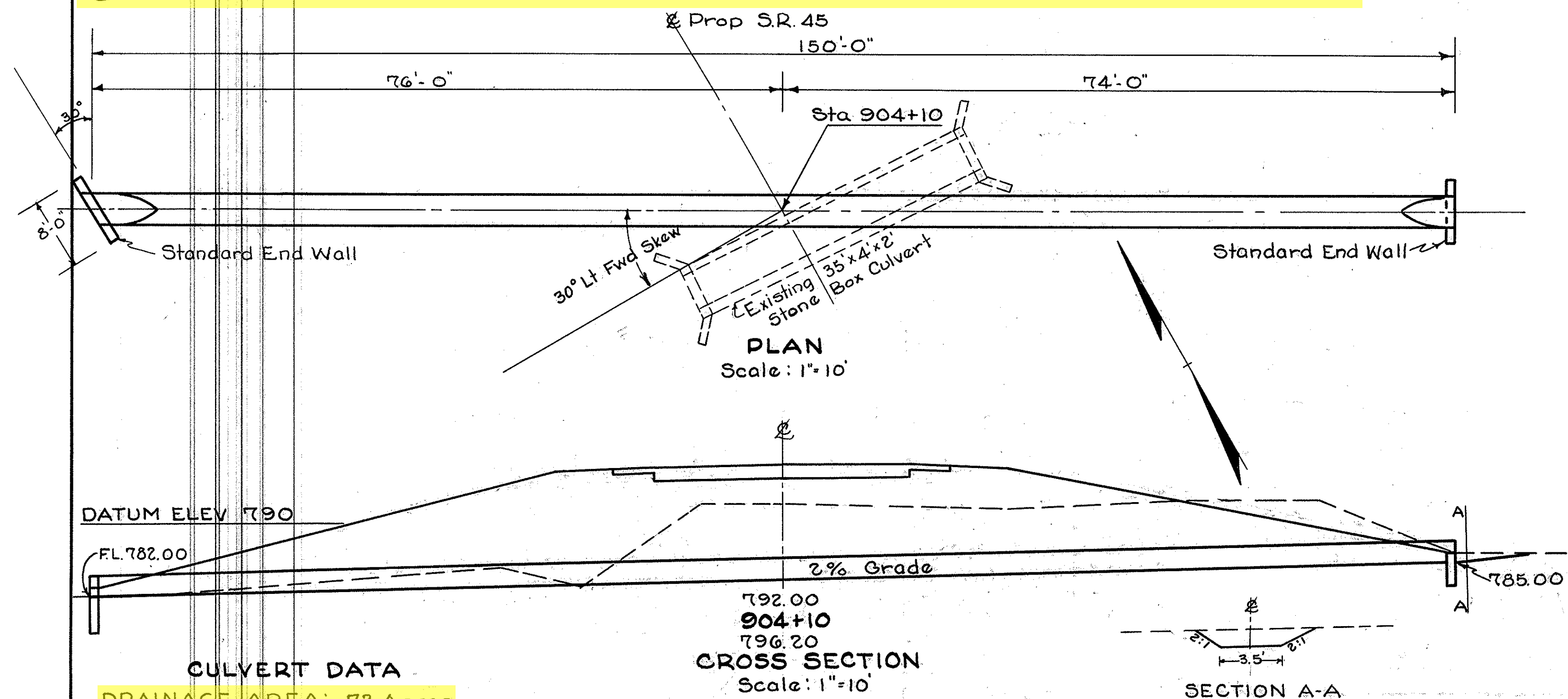
### **C1007.1**

Use discretion in removing:

- Small pipes based on roadway importance, pipe material longevity and if the pipe is under existing rigid pavement or base which is to remain in place.
- Any size pipe with more than 10 feet of cover.



# STRUCTURE No. ATB-45-1726 STA. 904+10 C-1



## CULVERT DATA

**DRAINAGE AREA: 72 Acres**

TYPE: Standard Pipe Culvert

SIZE: 42"x150'-0"

SKIEW: 30° Left Forward

STD DRWGS: S-27 PC.3; S-27 PC.4

WORK REQ'D: Remove and dispose existing structure. Build 42"x150'-0" Standard Pipe Culvert as shown. Excavate inlet and outlet channels as directed by the Engineer.

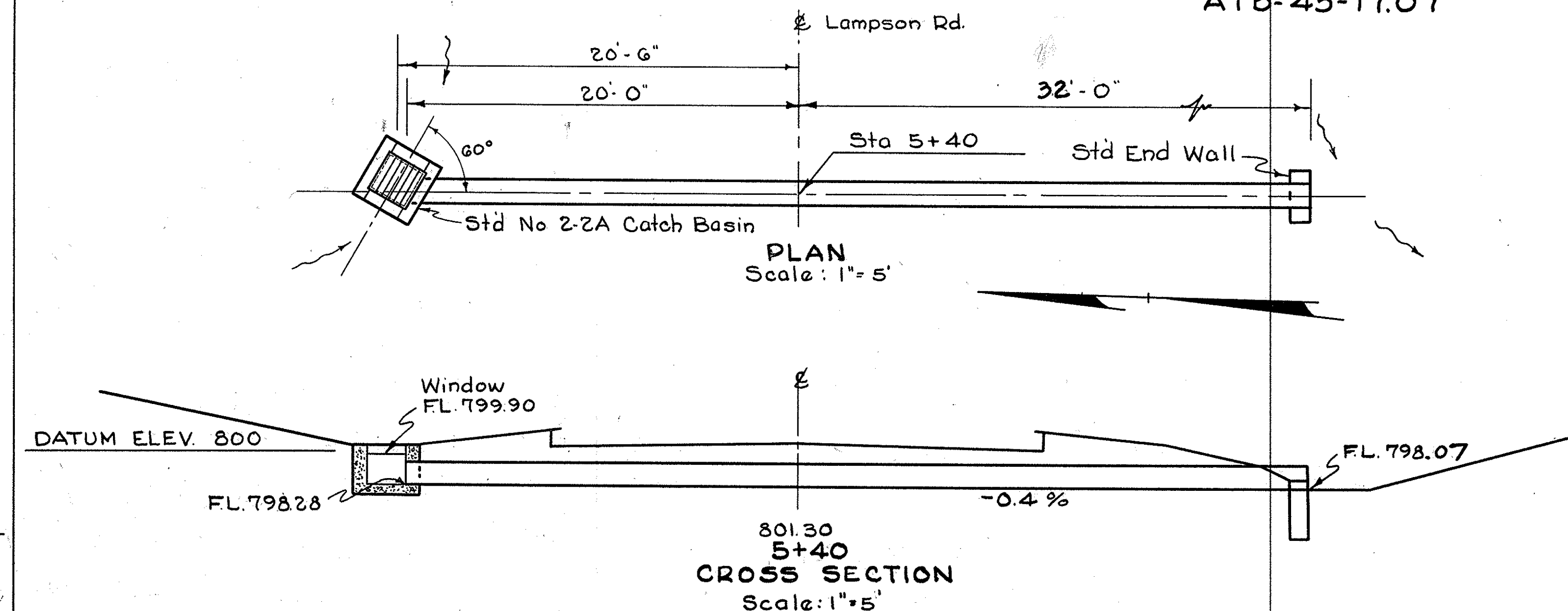
## ESTIMATED QUANTITIES

E-2	Excavation for Structures	145 C.Y.
E-3	Channel Excavation	1 C.Y.
S-1	Concrete for Structures (Class "E")	1.7 C.Y.
S-24	Removal of Existing Structure	Lump
S-27	42" Pipe for Roadway Culverts	150 L.F.

# STRUCTURE No. ATB-45-1758 S.R.R. STA. 5+40 ON APPROACH C-3

FED. RD. DIVISION	STATE	PROJECT	
2	OHIO		

ATB-45-17.07



## CULVERT DATA

**DRAINAGE AREA: 0.5 Acre**

TYPE: Standard Pipe Culvert

SIZE: 15"x52'-0"

SKIEW: None

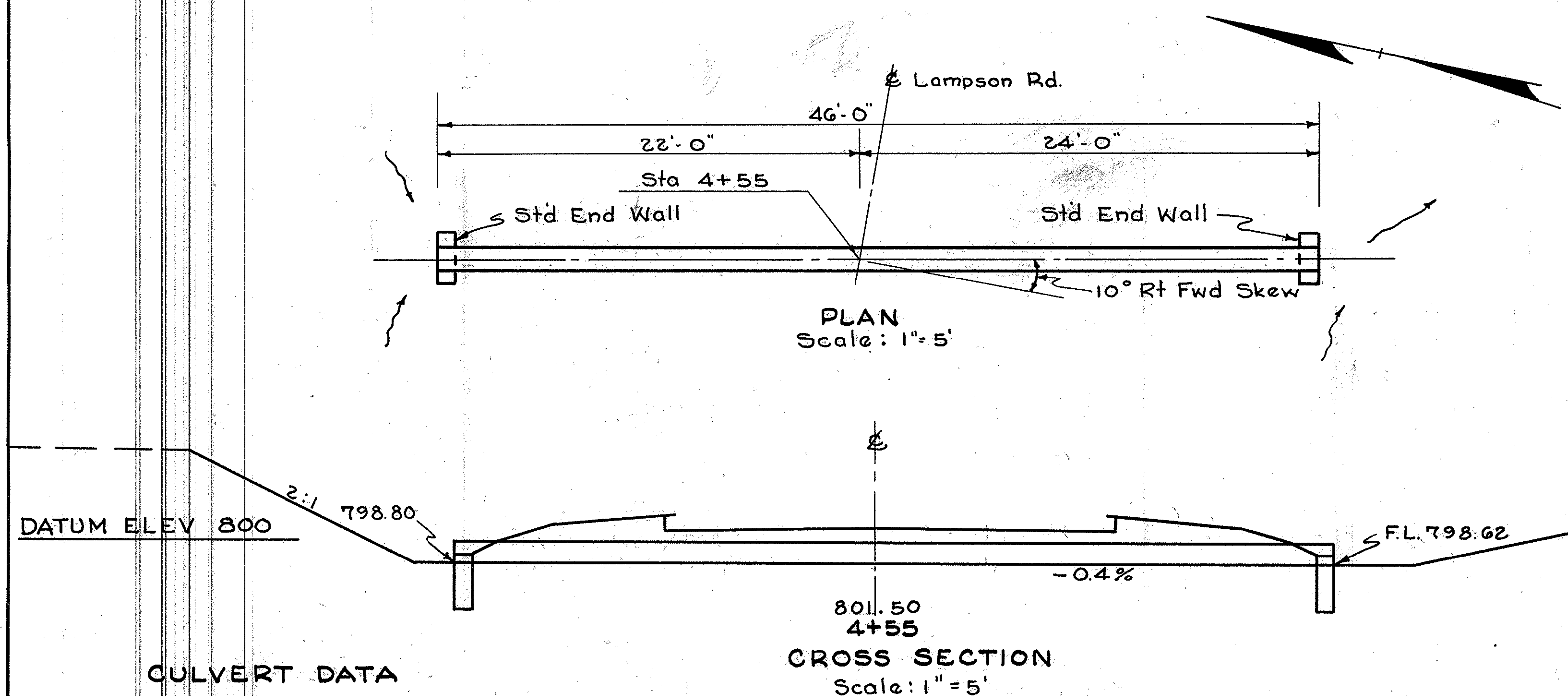
STD DRWGS: S-27 PC.3; S-27 PC.4

WORK REQ'D: Remove existing structure. Build new 15"x52'-0" Standard Pipe Culvert and connect into a Standard 2-2A Catch Basin as shown.

## ESTIMATED QUANTITIES

E-2	Excavation for Structures	9 C.Y.
S-1	Concrete for Structures (Class "E")	0.3 C.Y.
S-27	15" Pipe for Roadway Culverts M-G.4(d)	52 L.F.
I-8	Standard 2-2A Catch Basin	1 Each
E-12	Pipe Removed, 15" and Under	32 L.F.

# STRUCTURE No. ATB-45-1758 S.R.L. STA. 4+55 ON APPR. C-2



## CULVERT DATA

**DRAINAGE AREA: 1.4 Acres**

TYPE: Standard Pipe Culvert

SIZE: 15"x46'-0"

SKIEW: 10° Right Forward

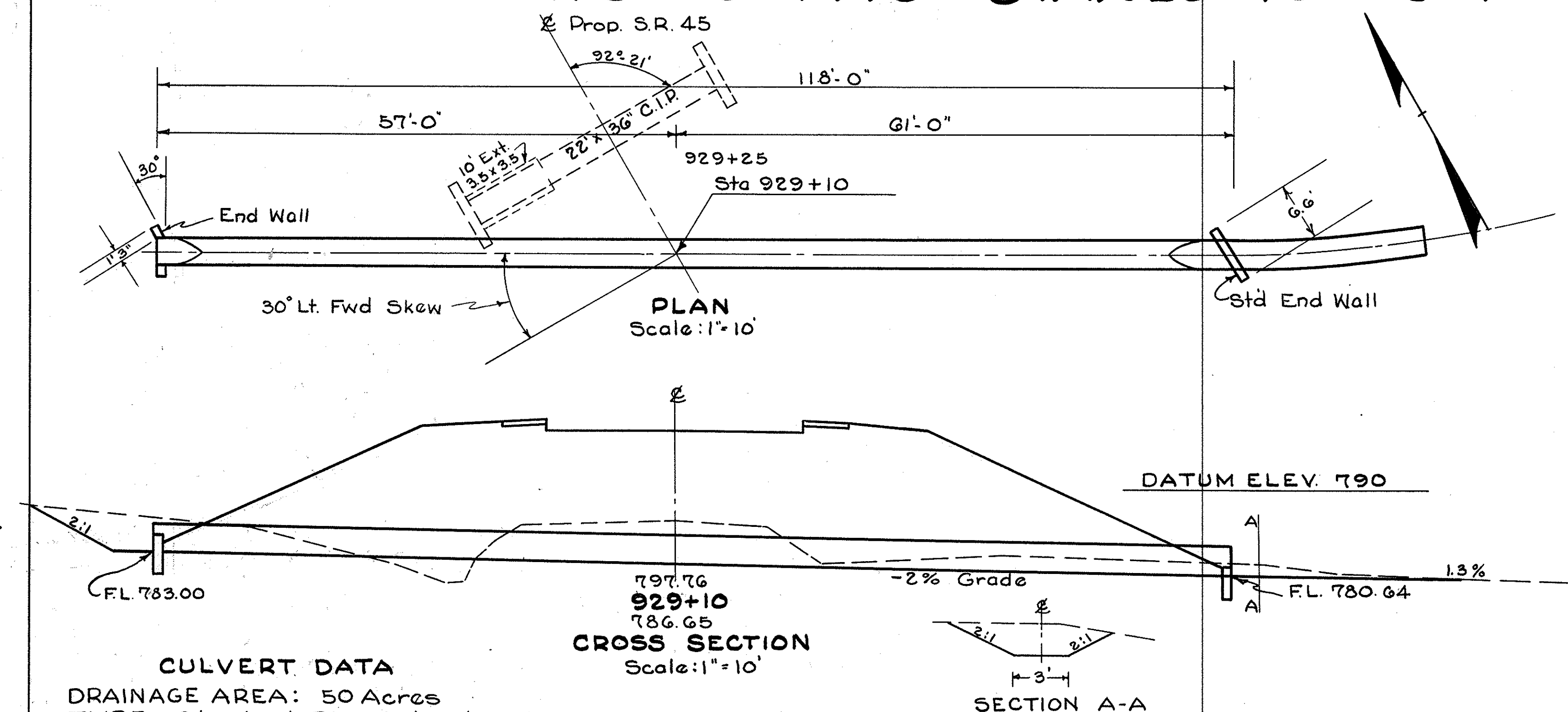
STD DRWGS: S-27 PC.3; S-27 PC.4

WORK REQ'D: Remove and dispose existing structure as directed by the Engineer. Build new 15"x46'-0" Standard Pipe Culvert as shown.

## ESTIMATED QUANTITIES

E-2	Excavation for Structures	8 C.Y.
S-1	Concrete for Structures (Class "E")	0.5 C.Y.
S-27	15" Pipe for Roadway Culverts M-G.4(d)	46 L.F.
E-12	Pipe Removed, 15" and Under	32 L.F.

# STRUCTURE No. ATB-45-1773 STA. 929+10 C-4



## CULVERT DATA

**DRAINAGE AREA: 50 Acres**

TYPE: Standard Pipe Culvert

SIZE: 36"x118'-0"

SKIEW: 30° Left Forward

STD DRWGS: S-27 PC.3; S-27 PC.4

WORK REQ'D: Remove and dispose existing 36"x32' structure. Build new 36"x118' Standard Pipe Culvert as shown. Excavate outlet channel as directed by the Engineer.

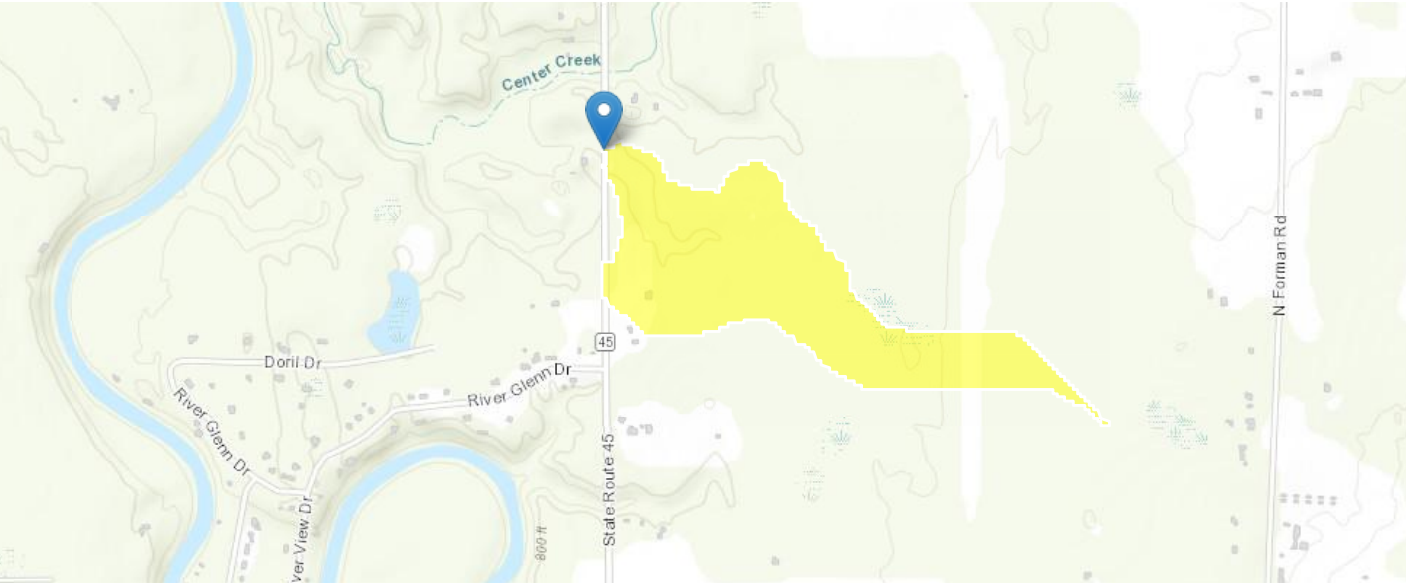
## ESTIMATED QUANTITIES

E-2	Excavation for Structures	53 C.Y.
E-3	Channel Excavation	3 C.Y.
S-1	Concrete for Structures (Class "E")	1.0 C.Y.
S-24	Removal of Existing Structures	Lump
S-27	36" Pipe for Roadway Culverts	118 L.F.



# StreamStats Report – ATB-45-17.196

Region ID: OH  
Workspace ID: OH20241104143538302000  
Clicked Point (Latitude, Longitude): 41.74821, -80.85462  
Time: 2024-11-04 09:36:01 -0500



Collapse All

## Basin Characteristics

Parameter Code	Parameter Description	Value	Unit
CSL1085LFP	Change in elevation divided by length between points 10 and 85 percent of distance along the longest flow path to the basin divide, LFP from 2D grid	54.8	feet per mi
DRNAREA	Area that drains to a point on a stream	0.11	square miles
LC92STOR	Percentage of water bodies and wetlands determined from the NLCD	18.3	percent
LFPLENGTH	Length of longest flow path	1.02	miles
OHREGA	Ohio Region A Indicator	1	dimensionless
OHREGC	Ohio Region C Indicator	0	dimensionless

## Peak-Flow Statistics

Peak-Flow Statistics Parameters [Peak Flow Full Model Reg A SIR2019 5018]

Parameter Code	Parameter Name	Value	Units	Min Limit	Max Limit
DRNAREA	Drainage Area	0.11	square miles	0.04	5989
OHREGC	Ohio Region C Indicator 1 if in C else 0	0	dimensionless	0	1
OHREGA	Ohio Region A Indicator 1 if in A else 0	1	dimensionless	0	1
CSL1085LFP	Stream Slope 10 and 85 Longest Flow Path	54.8	feet per mi	1.53	516
LC92STOR	Percent Storage from NLCD1992	18.3	percent	0	25.35

0.17 SQ MI via Google Earth  
0.11 SQ MI via Ex. Plans  
GOOD

## Peak-Flow Statistics Flow Report [Peak Flow Full Model Reg A SIR2019 5018]

PIL: Lower 90% Prediction Interval, PIU: Upper 90% Prediction Interval, ASEp: Average Standard Error of Prediction, SE: Standard Error, PC: Percent Correct, RMSE: Root Mean Squared Error, PseudoR<sup>2</sup>: Pseudo R Squared (other -- see report)

Statistic	Value	Unit	PIL	PIU	ASEp
50-percent AEP flood	14.5	ft <sup>3</sup> /s	7.46	28.2	40.1
20-percent AEP flood	24.2	ft <sup>3</sup> /s	13	45	37.2
10-percent AEP flood	31.6	ft <sup>3</sup> /s	16.9	59.2	37.6
4-percent AEP flood	42	ft <sup>3</sup> /s	22.2	79.5	38.1
2-percent AEP flood	50.4	ft <sup>3</sup> /s	26.3	96.8	37.8
1-percent AEP flood	59.5	ft <sup>3</sup> /s	30.6	116	39.6
0.2-percent AEP flood	82.8	ft <sup>3</sup> /s	41.8	164	40.3

### *Peak-Flow Statistics Citations*

**Koltun, G.F., 2019, Flood-frequency estimates for Ohio streamgages based on data through water year 2015 and techniques for estimating flood-frequency characteristics of rural, unregulated Ohio streams: U.S. Geological Survey Scientific Investigations Report 2019–5018, 25 p. (<https://dx.doi.org/10.3133/sir20195018>)**

USGS Data Disclaimer: Unless otherwise stated, all data, metadata and related materials are considered to satisfy the quality standards relative to the purpose for which the data were collected. Although these data and associated metadata have been reviewed for accuracy and completeness and approved for release by the U.S. Geological Survey (USGS), no warranty expressed or implied is made regarding the display or utility of the data for other purposes, nor on all computer systems, nor shall the act of distribution constitute any such warranty.

USGS Software Disclaimer: This software has been approved for release by the U.S. Geological Survey (USGS). Although the software has been subjected to rigorous review, the USGS reserves the right to update the software as needed pursuant to further analysis and review. No warranty, expressed or implied, is made by the USGS or the U.S. Government as to the functionality of the software and related material nor shall the fact of release constitute any such warranty. Furthermore, the software is released on condition that neither the USGS nor the U.S. Government shall be held liable for any damages resulting from its authorized or unauthorized use.

USGS Product Names Disclaimer: Any use of trade, firm, or product names is for descriptive purposes only and does not imply endorsement by the U.S. Government.

Application Version: 4.24.0

StreamStats Services Version: 1.2.22

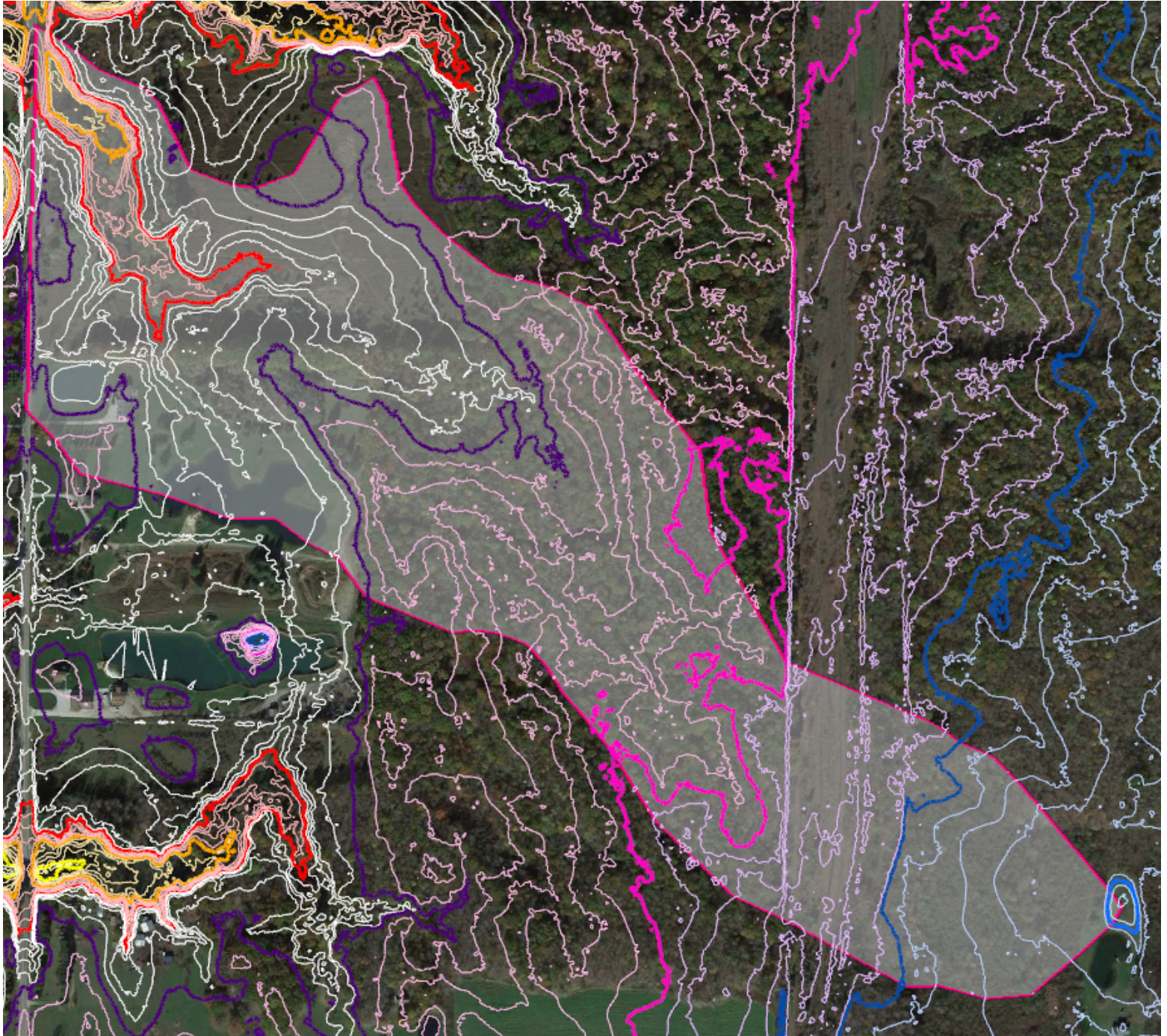
NSS Services Version: 2.2.1



**ATB-45-17.196**

Google Earth Watershed Delineation Check

Watershed = 0.17 SQ MI



MINIMUM CULVERT SIZES	1002-1
	REFERENCE SECTION 1002.3.1

	Roadway Types	
	Interstates, Freeways, & Expressways	Other
Fill Depth (ft)	Minimum Size (inches)	Minimum Size (inches)
< 8	24	15
8 to < 16	30	24
16 to 32	36	30
> 32	42	36



# MANNING'S "n" VALUES CORRUGATED METAL PIPE TYPE A CONDUIT

1105-2

 REFERENCE SECTION  
1105.5.5

1/2" Corrugations		2" Corrugations		2 1/2" Corrugations	
Diameter (ft)	Manning's n	Diameter (ft)	Manning's n*	Diameter (ft)	Manning's n*
1.25	0.0250	5.0	0.0332	5.0	0.035
1.50	0.0249	5.5	0.0330	5.5	0.035
1.75	0.0248	6.0	0.0327	6.0	0.034
2.0	0.0247	6.5	0.0325	6.5	0.034
2.5	0.0244	7.0	0.0323	7.0	0.034
3.0	0.0241	7.5	0.0321	7.5	0.034
3.5	0.0237	8.0	0.0320	8.0	0.034
4.0	0.0235	8.5	0.0318	8.5	0.034
4.5	0.0233	9.0	0.0317	9.0	0.033
5.0	0.0232	9.5	0.0315	9.5	0.033
5.5	0.0231	10.0	0.0314	10.0	0.033
6.0	0.0229	10.5	0.0313	10.5	0.033
6.5	0.0228	11.0	0.0312	11.0	0.033
7.0	0.0227	11.5	0.0311	11.5	0.033
7.5	0.0226	12.0	0.0310	12.0	0.033
8.0	0.0225	12.5	0.0309	12.5	0.033
1" Corrugations		13.0	0.0308	13.0	0.033
Diameter (ft)	Manning's n	13.5	0.0307	13.5	0.033
		14.0	0.0307	14.0	0.032
3.0	0.0281	14.5	0.0306	14.5	0.032
3.5	0.0278	15.0	0.0305	15.0	0.032
4.0	0.0275	15.5	0.0305	15.5	0.032
4.5	0.0273	16.0	0.0304	16.0	0.032
5.0	0.0271	16.5	0.0304	16.5	0.032
5.5	0.0269	17.0	0.0303	17.0	0.032
6.0	0.0267	17.5	0.0303	17.5	0.032
6.5	0.0266	18.0	0.0302	18.0	0.032
7.0	0.0265	18.5	0.0302	18.5	0.032
7.5	0.0263	19.0	0.0301	19.0	0.032
8.0	0.0263	19.5	0.0301	19.5	0.032
8.5	0.0262	20.0	0.0300	20.0	0.032
9.0	0.0261	20.5	0.0300	20.5	0.032
9.5	0.0260	21.0	0.0300	21.0	0.031
10.0	0.0260	* 0.026 for all field paved structural plate pipe			

# ATB/TRU-CULVERTS-FY2026 (PID 122339)

## Proposed Culvert Replacement @ ATB-45-17.196

Culvert Geometry	Existing	Design Smooth	Design Corr.
Existing Drainage Area (acres) ~ for reference only ~	72	72	72
Existing Q (cfs) ~ for reference only ~	N/A	N/A	N/A
Drainage Area (acres)	70	70	70
Roadway Elevation (feet)	795.9	795.9	795.9
Inside Width (inches)	42	42	42
Inside Height (inches)	42	42	42
Pipe Material	CMP	RCP or HDPE	CMP
Manning's n	0.0237	0.0120	0.0237
Length (feet)	152	143	143
Inlet Invert (feet)	783.89	783.89	783.89
Outlet Invert (feet)	780.02	780.00	780.00
Slope	0.0255	0.0272	0.0272
Pipe Crown (feet)	787.39	787.39	787.39
Wall Thickness (inches)	1	5	1
Height of Cover (feet)	8.4	8.1	8.4

### Notes:

1. Culvert is a replacement to an existing 42" CMP.
2. Fill depth exceeds 8' --> 24" minimum culvert size.

### Tailwater Data

4-percent AEP TW (feet)	781.1	781.1	781.1
2-percent AEP TW (feet)	781.1	781.1	781.1
1-percent AEP TW (feet)	781.1	781.1	781.1

### Hydraulic Data (StreamStats Flows & CDSS)

Q 50-percent AEP (cfs)	15	15	15
OHWL (feet)	785.6	785.5	785.6
Q 4-percent AEP (cfs)	42	42	42
HW 4-percent AEP (feet)	787.0	786.8	787.0
V 4-percent AEP (fps)	9.0	15.2	9.3
Q 2-percent AEP (cfs)	50	50	50
HW 2-percent AEP (feet)	787.4	787.1	787.4
V 2-percent AEP (fps)	9.4	15.8	9.7
Q 1-percent AEP (cfs)	60	60	60
HW 1-percent AEP (feet)	788.0	787.5	788.0
V 1-percent AEP (fps)	9.8	16.6	10.1

# ATB/TRU-CULVERTS-FY2026 (PID 122339)

## Proposed Culvert Replacement @ ATB-45-17.196

### Design Storm Controls - HW (L&D 1006.2.1)

**A. 2 feet below the near, low edge of the pavement for drainage areas 1000 acres or greater and 1 foot below for culverts draining less than 1000 acres.**

✓ ✓ ✓

Ditch Break Overflow Elevation	791.00	791.00	791.00
Difference = (Ditch Break - HW 4-percent AEP)	4.00	4.20	4.04

Note: The near low edge of pavement is the location where roadway overtopping will occur. This may or may not be located directly over the culvert. Where the overtopping point on the roadway is outside the watershed break, the ditch break overflow elevation should be utilized as a headwater control in lieu of 1006.2.1 A.

**B. 2 feet above the inlet crown of the culvert or above a tailwater elevation that submerges the inlet crown in flat terrain.**

✓ ✓ ✓

Difference = (Pipe Crown - HW 4-percent AEP)	0.39	0.59	0.43
--	------	------	------

Note: Arbitrary control which generally applies to small culverts. Where large structures (greater than or equal to 10 feet in span) are involved, the structure should be sized to pass the design storm while maintaining a free water surface through the structure, unless tail water controls. If applicable, use smooth pipe to establish HW.

**C. 4 feet above the inlet crown of a culvert in a deep ravine.**

N/A N/A N/A

Note: Arbitrary control which generally applies to small culverts. Where large structures (greater than or equal to 10 feet in span) are involved, the structure should be sized to pass the design storm while maintaining a free water surface through the structure, unless tail water controls. If applicable, use corrugated pipe to establish HW.

**D. 1 foot below the near edge of pavement for bicycle pathways.**

N/A N/A N/A

### Check Storm Controls - HW (L&D 1006.2.2)

**A. 2 feet below the lowest ground elevation adjacent to an occupied building for a 2-percent AEP storm (it is not intended, however, to lower existing high water elevations around buildings).**

N/A N/A N/A

Lowest Ground Elevation Adjacent to Occupied Building			
Difference = (Lowest Ground - HW 2-percent AEP)			

**B. Limit the maximum 1-percent AEP HW depth to twice the diameter or rise of the culvert.**

✓ ✓ ✓

HW 1-percent AEP	788.00	787.50	787.98
Inlet Invert + 2 * (Diameter or Rise)	790.89	790.89	790.89

**C. Size a replacement structure to prevent overtopping by the 1-percent AEP storm where overtopping would not occur with the existing structure.**

N/A

**D. Size a replacement structure so that flooding of upstream land is not increased for the 1-percent AEP storm when compared to the existing structure. Before implementing this criteria consider the type of upstream property and land use.**

N/A N/A N/A

**E. Controls specific to an FIS. See section 1006.4.**

N/A N/A N/A



# CULVERT ANALYSIS

**PID :** 122339      **Date :** 11/25/2024      **Project :** ATB/TRU-CULVERTS-FY26      **Location :** ATB-45-17.196

**Description :** Ex. 42" CMP OHWM

**Designer :** MEP

**HEADWATER CONTROL CODES:**      INLET - Inlet Control.  
OUTLET - Outlet Control.  
OUTLET\* - Outlet Control with backwater curve used to compute headwater. See Figure III - 7E in HDS 5 for type flow.  
OUTLET\*\* - Outlet Control - See Figure III - 7D in HDS 5 for type flow.  
N/A - Flow is supercritical with low headwater and low tailwater. Control Section is at the inlet.

**Pipe Number :** 1      **Use HW :** 0      **Inlet Invert Elevation (ft.) :** 783.89      **Outlet Invert Elevation (ft.) :** 780.02  
**Pipe Quantity :** 1  
**Culvert Type :** Circular Corrugated      **Pipe Length (ft.) :** 152.00      **Culvert Slope (ft./ft.) :** 0.0255  
**Corrugation Type :** Corrugated Metal Pipe (2 2/3 x 1/2 in. corrugations)  
**Pipe Size :** 42 in.  
**Design Manning 'n' :** 0.0237  
**Entrance Type :** Half Headwall      **Loss Coef. Ke :** 0.9000

FLOW (cfs.)	HEAD LOSS (ft.)	HWI (ft.)	HWO (ft.)	FLOW TYPE	VELOCITY (fps.)	DN (ft.)	DC (ft.)	MANNING N	HEADWATER CONTROL	BURIED DEPTH (ft.)	TAILWATER ELEVATION (ft.)
15.00	3.21	785.57	N/A	1 - C	6.83	0.98	1.18	0.0237	INLET	0.00	781.12



# CULVERT ANALYSIS

**PID :** 122339      **Date :** 11/25/2024      **Project :** ATB/TRU-CULVERTS-FY26      **Location :** ATB-45-17.196

**Description :** Ex. 42" CMP Analysis

**Designer :** MEP

**HEADWATER CONTROL CODES:** INLET - Inlet Control.  
OUTLET - Outlet Control.  
OUTLET\* - Outlet Control with backwater curve used to compute headwater. See Figure III - 7E in HDS 5 for type flow.  
OUTLET\*\* - Outlet Control - See Figure III - 7D in HDS 5 for type flow.  
N/A - Flow is supercritical with low headwater and low tailwater. Control Section is at the inlet.

**Pipe Number :** 1      **Use HW :** 0      **Inlet Invert Elevation (ft.) :** 783.89      **Outlet Invert Elevation (ft.) :** 780.02  
**Pipe Quantity :** 1  
**Culvert Type :** Circular Corrugated      **Pipe Length (ft.) :** 152.00      **Culvert Slope (ft./ft.) :** 0.0255  
**Corrugation Type :** Corrugated Metal Pipe (2 2/3 x 1/2 in. corrugations)  
**Pipe Size :** 42 in.  
**Design Manning 'n' :** 0.0237  
**Entrance Type :** Half Headwall      **Loss Coef. Ke :** 0.9000

	FLOW (cfs.)	HEAD LOSS (ft.)	HWI (ft.)	HWO (ft.)	FLOW TYPE	VELOCITY (fps.)	DN (ft.)	DC (ft.)	MANNING N	HEADWATER CONTROL	BURIED DEPTH (ft.)	TAILWATER ELEVATION (ft.)
	42.00	4.18	786.96	N/A	1 - C	9.04	1.70	2.02	0.0237	INLET	0.00	781.12
	44.00	4.25	787.06	N/A	1 - C	9.15	1.75	2.07	0.0237	INLET	0.00	781.12
	46.00	4.33	787.16	N/A	1 - C	9.26	1.80	2.12	0.0237	INLET	0.00	781.12
	48.00	4.41	787.26	N/A	1 - C	9.35	1.84	2.16	0.0237	INLET	0.00	781.12
	50.00	4.50	787.37	N/A	1 - C	9.44	1.89	2.21	0.0237	INLET	0.00	781.12
	52.00	4.59	787.49	N/A	1 - C	9.53	1.94	2.26	0.0237	INLET	0.00	781.12
	54.00	4.68	787.60	N/A	1 - C	9.61	1.98	2.30	0.0237	INLET	0.00	781.12
	56.00	4.78	787.72	N/A	1 - C	9.69	2.03	2.34	0.0237	INLET	0.00	781.12



# CULVERT ANALYSIS

FLOW (cfs.)	HEAD LOSS (ft.)	HWI (ft.)	HWO (ft.)	FLOW TYPE	VELOCITY (fps.)	DN (ft.)	DC (ft.)	MANNING N	HEADWATER CONTROL	BURIED DEPTH (ft.)	TAILWATER ELEVATION (ft.)
58.00	4.88	787.85	N/A	1 - C	9.77	2.07	2.38	0.0237	INLET	0.00	781.12
60.00	4.99	787.98	N/A	1 - C	9.84	2.12	2.43	0.0237	INLET	0.00	781.12



# UNIVERSAL CULVERT DESIGN

PID : 122339      Date : 11/25/2024      Project : ATB/TRU-CULVERTS-FY26      Location : ATB-45-17.196

Description : Proposed Culvert Design

Designer : MEP

**HEADWATER CONTROL CODES:**      INLET - Inlet Control.  
OUTLET - Outlet Control.  
OUTLET\* - Outlet Control with backwater curve used to compute headwater. See Figure III - 7E in HDS 5 for type flow.  
OUTLET\*\* - Outlet Control - See Figure III - 7D in HDS 5 for type flow.  
N/A - Flow is supercritical with low headwater and low tailwater. Control Section is at the inlet.

Inlet Invert Elevation (ft.) : 783.89      Outlet Invert Elevation (ft.) : 780.02      Tailwater Elevation (ft.) : 781.10      Overflow Elevation (ft.) : 791.00  
Allowable Headwater Elevation (ft.) : 791.00      or Diameter + 2 ft.      (whichever is less)  
Pipe Length (ft.) : 152.00      Culvert Slope (ft./ft.) : 0.0255      Design Manning 'n' : 0.0120  
Design Discharge (cfs) : 42.00      @ 25 yrs.      Flood Discharge (cfs) : 50.00      @ 50 yrs.

	FLOW (cfs.)	PIPE #	CULVERT SIZE	HWI (ft.)	HWO (ft.)	FLOW TYPE	VELOCITY (fps.)	DN (ft.)	DC (ft.)	MANNING N	HEADWATER CONTROL	OVER FLOW (cfs.)	DESIGN CODE	BURIAL DEPTH (ft.)
CULVERT TYPE : CIRCULAR SMOOTH				Entrance Type : Half Headwall				Entrance Loss (Ke) : 0.20						
Ex. culvert size is sufficient and will be mimicked with the prop. design.	42.00	1	30 in.	787.90	785.07	2 - E	15.05	1.38	2.17	0.0120	INLET	0.00	D	0.00
	42.00	1	27 in.	788.90	786.65	2 - E	14.90	1.50	2.12	0.0120	INLET	0.00	D - 1	0.00
	42.00	1	24 in.	790.73	789.77	2 - E	13.37	2.00	1.96	0.0120	INLET	0.00	D - 2	0.00
	50.00	1	30 in.	788.84	786.27	2 - E	15.66	1.55	2.30	0.0120	INLET	0.00	F	0.00
	50.00	1	27 in.	790.31	788.54	2 - E	15.30	1.72	2.18	0.0120	INLET	0.00	F - 1	0.00
	43.00	1	24 in.	793.02	793.02	2 - E	13.69	2.00	1.96	0.0120	INLET	7.00	F - 2	0.00
CULVERT TYPE : CIRCULAR CORRUGATED				Entrance Type : Half Headwall				Entrance Loss (Ke) : 0.90						
Corrugated Metal Pipe (2 2/3 x 1/2 in. corrugations)														
	42.00	1	36 in.	787.49	785.68	2 - E	8.87	1.91	2.11	0.0241	INLET	0.00	D	0.00
	42.00	1	30 in.	789.13	790.10	2 - F	9.28	2.50	2.17	0.0244	OUTLET**	0.00	D - 2	0.00
	42.00	1	42 in.	786.96	N/A	1 - C	9.04	1.70	2.02	0.0237	INLET	0.00	D + 1	0.00



# UNIVERSAL CULVERT DESIGN

FLOW (cfs.)	PIPE #	CULVERT SIZE	HWI (ft.)	HWO (ft.)	FLOW TYPE	VELOCITY (fps.)	DN (ft.)	DC (ft.)	MANNING N	HEADWATER CONTROL	OVER FLOW (cfs.)	DESIGN CODE	BURIAL DEPTH (ft.)
50.00	1	36 in.	788.24	787.07	2 - E	9.15	2.17	2.30	0.0241	INLET	0.00	F	0.00
44.30	1	30 in.	790.61	793.39	2 - F	9.64	2.50	2.21	0.0244	OUTLET**	5.70	F - 2	0.00
50.00	1	42 in.	787.37	N/A	1 - C	9.44	1.89	2.21	0.0237	INLET	0.00	F + 1	0.00
<b>Corrugated Metal Pipe (3 x 1 in. corrugations)</b>													
42.00	1	36 in.	787.49	787.83	2 - F	7.91	2.13	2.11	0.0281	OUTLET*	0.00	D	0.00
42.00	1	42 in.	786.96	N/A	1 - C	8.02	1.87	2.02	0.0278	INLET	0.00	D + 1	0.00
50.00	1	36 in.	788.24	788.25	2 - F	8.60	2.50	2.30	0.0281	OUTLET*	0.00	F	0.00
50.00	1	42 in.	787.37	N/A	1 - C	8.35	2.09	2.21	0.0278	INLET	0.00	F + 1	0.00
<b>Corrugated Metal Pipe (6 x 2 in. corrugations)</b>													
42.00	1	60 in.	786.49	N/A	1 - C	6.95	1.73	1.81	0.0332	INLET	0.00	D	0.00
42.00	1	66 in.	786.38	N/A	1 - C	6.93	1.66	1.76	0.0330	INLET	0.00	D + 1	0.00
50.00	1	60 in.	786.76	N/A	1 - C	7.29	1.90	1.98	0.0332	INLET	0.00	F	0.00
50.00	1	66 in.	786.65	N/A	1 - C	7.28	1.82	1.92	0.0330	INLET	0.00	F + 1	0.00
<b>Corrugated Metal Pipe (6 x 2 in. corrugations, Field Paved Invert)</b>													
42.00	1	60 in.	786.49	N/A	1 - C	8.28	1.53	1.81	0.0260	INLET	0.00	D	0.00
42.00	1	66 in.	786.38	N/A	1 - C	8.21	1.47	1.76	0.0260	INLET	0.00	D + 1	0.00
50.00	1	60 in.	786.76	N/A	1 - C	8.70	1.67	1.98	0.0260	INLET	0.00	F	0.00
50.00	1	66 in.	786.65	N/A	1 - C	8.64	1.61	1.92	0.0260	INLET	0.00	F + 1	0.00





# CULVERT ANALYSIS

**PID :** 122339      **Date :** 11/25/2024      **Project :** ATB/TRU-CULVERTS-FY26      **Location :** ATB-45-17.196

**Description :** Prop. 42" Smooth Analysis

**Designer :** MEP

**HEADWATER CONTROL CODES:**      INLET - Inlet Control.  
OUTLET - Outlet Control.  
OUTLET\* - Outlet Control with backwater curve used to compute headwater. See Figure III - 7E in HDS 5 for type flow.  
OUTLET\*\* - Outlet Control - See Figure III - 7D in HDS 5 for type flow.  
N/A - Flow is supercritical with low headwater and low tailwater. Control Section is at the inlet.

**Pipe Number :** 1      **Use HW :** 0      **Inlet Invert Elevation (ft.) :** 783.89      **Outlet Invert Elevation (ft.) :** 780.00  
**Pipe Quantity :** 1  
**Culvert Type :** Circular Smooth      **Pipe Length (ft.) :** 143.00      **Culvert Slope (ft./ft.) :** 0.0272  
**Corrugation Type :**  
**Pipe Size :** 42 in.  
**Design Manning 'n' :** (default)  
**Entrance Type :** Half Headwall      **Loss Coef. Ke :** 0.2000

FLOW (cfs.)	HEAD LOSS (ft.)	HWI (ft.)	HWO (ft.)	FLOW TYPE	VELOCITY (fps.)	DN (ft.)	DC (ft.)	MANNING N	HEADWATER CONTROL	BURIED DEPTH (ft.)	TAILWATER ELEVATION (ft.)
42.00	4.06	786.82	N/A	1 - C	15.24	1.15	2.02	0.0120	INLET	0.00	781.10
44.00	4.11	786.90	N/A	1 - C	15.43	1.18	2.07	0.0120	INLET	0.00	781.10
46.00	4.17	786.98	N/A	1 - C	15.63	1.21	2.12	0.0120	INLET	0.00	781.10
48.00	4.22	787.05	N/A	1 - C	15.82	1.23	2.16	0.0120	INLET	0.00	781.10
50.00	4.28	787.13	N/A	1 - C	16.00	1.26	2.21	0.0120	INLET	0.00	781.10
52.00	4.34	787.21	N/A	1 - C	16.16	1.29	2.26	0.0120	INLET	0.00	781.10
54.00	4.39	787.29	N/A	1 - C	16.34	1.32	2.30	0.0120	INLET	0.00	781.10
56.00	4.45	787.38	N/A	1 - C	16.51	1.34	2.34	0.0120	INLET	0.00	781.10



# CULVERT ANALYSIS

FLOW (cfs.)	HEAD LOSS (ft.)	HWI (ft.)	HWO (ft.)	FLOW TYPE	VELOCITY (fps.)	DN (ft.)	DC (ft.)	MANNING N	HEADWATER CONTROL	BURIED DEPTH (ft.)	TAILWATER ELEVATION (ft.)
58.00	4.52	787.46	N/A	1 - C	16.65	1.37	2.38	0.0120	INLET	0.00	781.10
60.00	4.58	787.54	N/A	1 - C	16.82	1.39	2.43	0.0120	INLET	0.00	781.10



# CULVERT ANALYSIS

**PID :** 122339      **Date :** 11/25/2024      **Project :** ATB/TRU-CULVERTS-FY26      **Location :** ATB-45-17.196

**Description :** Prop. 42" Corrugated Analysis

**Designer :** MEP

**HEADWATER CONTROL CODES:**      INLET - Inlet Control.  
OUTLET - Outlet Control.  
OUTLET\* - Outlet Control with backwater curve used to compute headwater. See Figure III - 7E in HDS 5 for type flow.  
OUTLET\*\* - Outlet Control - See Figure III - 7D in HDS 5 for type flow.  
N/A - Flow is supercritical with low headwater and low tailwater. Control Section is at the inlet.

<b>Pipe Number :</b> 1	<b>Use HW :</b> 0	<b>Inlet Invert Elevation (ft.) :</b> 783.89	<b>Outlet Invert Elevation (ft.) :</b> 780.00
<b>Pipe Quantity :</b> 1			
<b>Culvert Type :</b> Circular Corrugated		<b>Pipe Length (ft.) :</b> 143.00	<b>Culvert Slope (ft./ft.) :</b> 0.0272
<b>Corrugation Type :</b> Corrugated Metal Pipe (2 2/3 x 1/2 in. corrugations)			
<b>Pipe Size :</b> 42 in.			
<b>Design Manning 'n' :</b> 0.0237			
<b>Entrance Type :</b> Half Headwall		<b>Loss Coef. Ke :</b> 0.9000	

FLOW (cfs.)	HEAD LOSS (ft.)	HWI (ft.)	HWO (ft.)	FLOW TYPE	VELOCITY (fps.)	DN (ft.)	DC (ft.)	MANNING N	HEADWATER CONTROL	BURIED DEPTH (ft.)	TAILWATER ELEVATION (ft.)
42.00	4.20	786.96	N/A	1 - C	9.27	1.67	2.02	0.0237	INLET	0.00	781.10
44.00	4.27	787.06	N/A	1 - C	9.39	1.71	2.07	0.0237	INLET	0.00	781.10
46.00	4.35	787.16	N/A	1 - C	9.49	1.76	2.12	0.0237	INLET	0.00	781.10
48.00	4.43	787.26	N/A	1 - C	9.59	1.81	2.16	0.0237	INLET	0.00	781.10
50.00	4.52	787.37	N/A	1 - C	9.68	1.85	2.21	0.0237	INLET	0.00	781.10
52.00	4.61	787.49	N/A	1 - C	9.77	1.90	2.26	0.0237	INLET	0.00	781.10
54.00	4.70	787.60	N/A	1 - C	9.86	1.94	2.30	0.0237	INLET	0.00	781.10
56.00	4.80	787.72	N/A	1 - C	9.95	1.98	2.34	0.0237	INLET	0.00	781.10



# CULVERT ANALYSIS

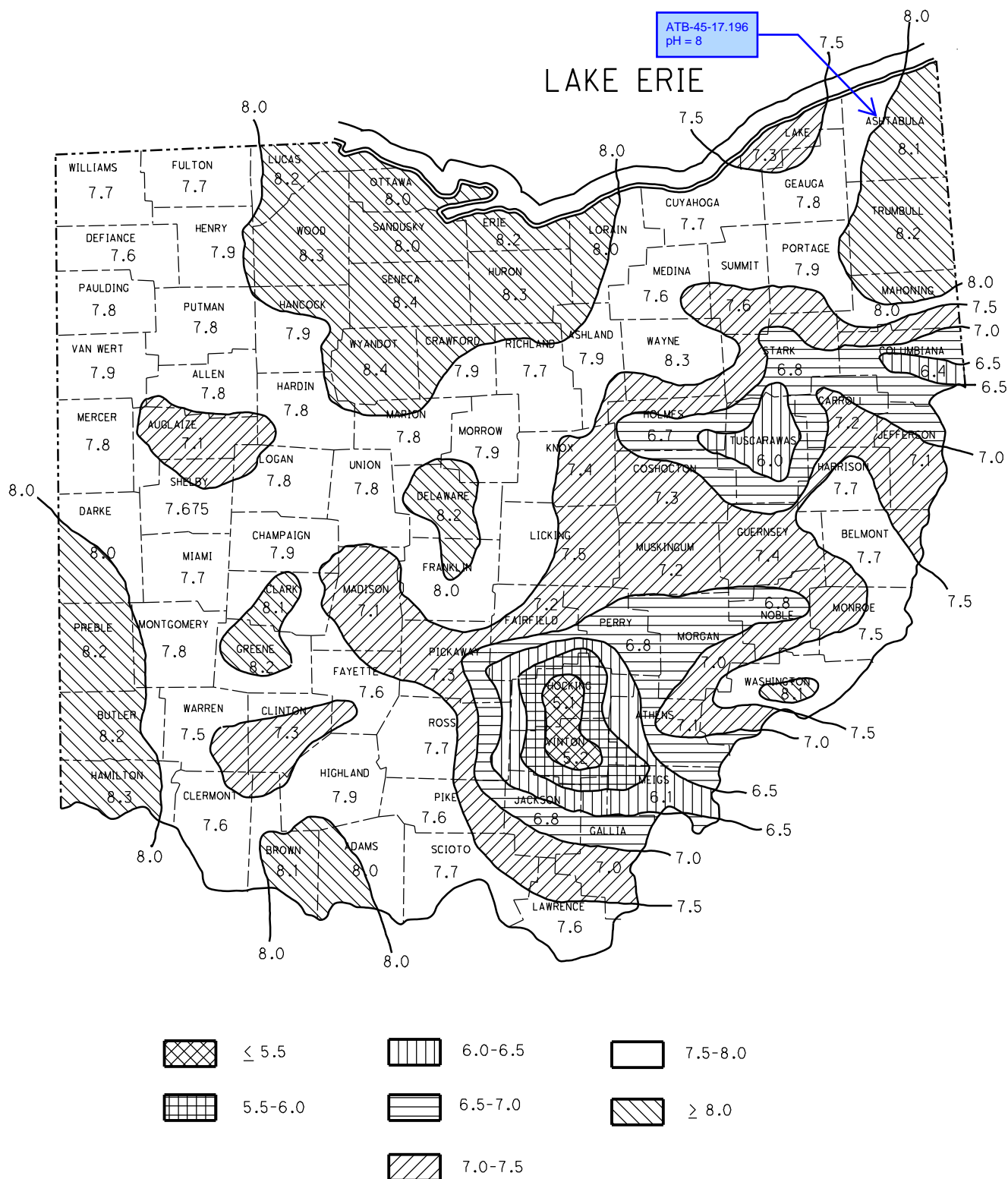
FLOW (cfs.)	HEAD LOSS (ft.)	HWI (ft.)	HWO (ft.)	FLOW TYPE	VELOCITY (fps.)	DN (ft.)	DC (ft.)	MANNING N	HEADWATER CONTROL	BURIED DEPTH (ft.)	TAILWATER ELEVATION (ft.)
58.00	4.90	787.85	N/A	1 - C	10.03	2.03	2.38	0.0237	INLET	0.00	781.10
60.00	5.01	787.98	N/A	1 - C	10.11	2.07	2.43	0.0237	INLET	0.00	781.10

# WATER pH CONTOURS BASED ON AVE. pH FOR COUNTIES

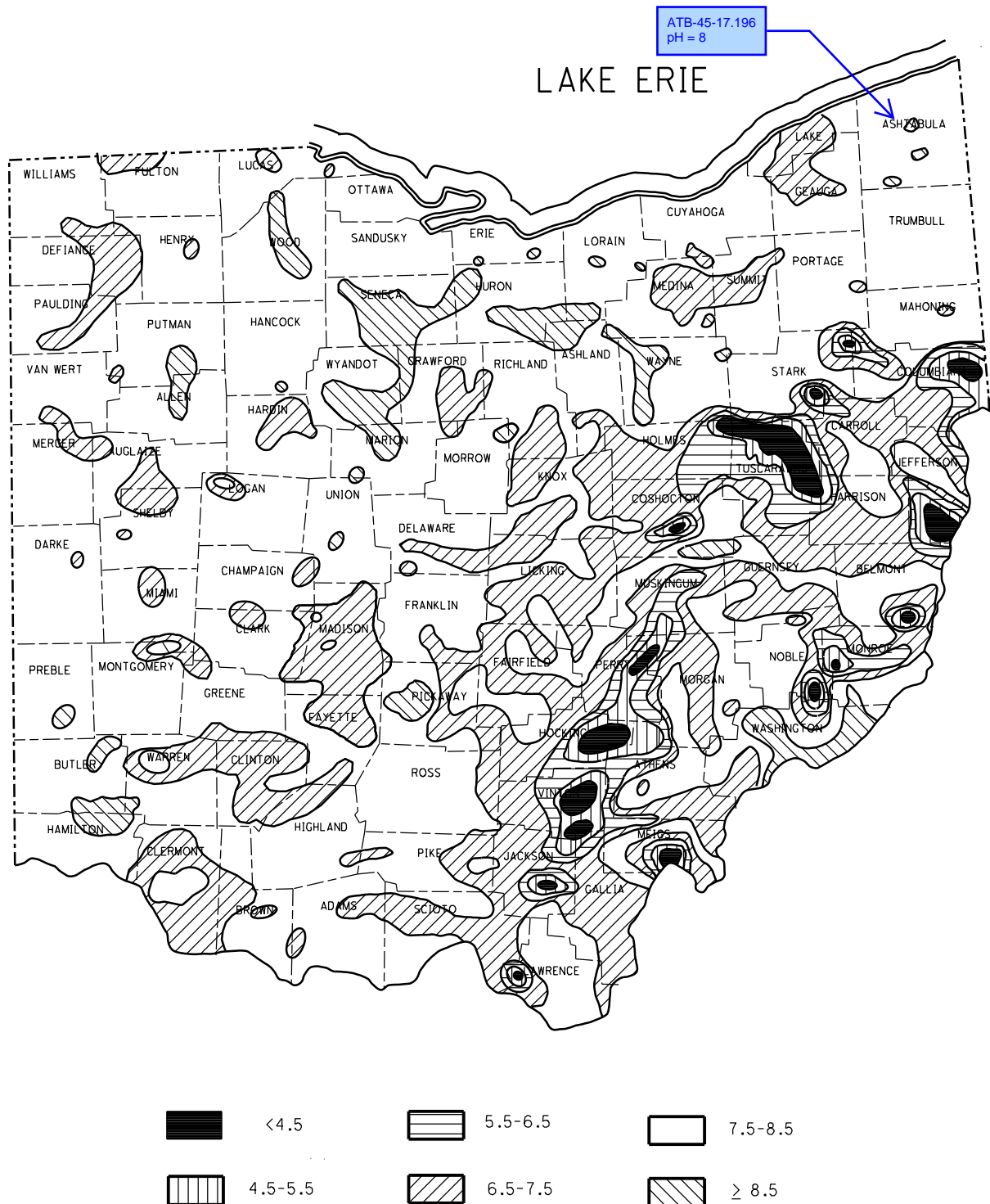
1002-2

## REFERENCE SECTION

1002.3.1



## 1002.3.1



County	Achtabula	Route	45	Section	17.196	PID	122339	Shape	Circular
Station	904+10	Station							

User Input	
pH <sub>w</sub>	Abrasion Level
8.0	1.0

Constants and Calculated Values			
pH <sub>s</sub>	Sediment/Rise	End of Service Life GA	Service Life Required
7.6	0	4	75

Metal Conduit Durability Results																							
Material		707.01-, 707.02-, or 707.03- Metallic-coated (galvanized)	707.01- or 707.02- or 707.03- Metallic-coated (galvanized)-with Concrete Field Paving	707.01 or 707.02 Metallic-coated (Aluminized)	***707.01- or 707.02- Metallic-coated (aluminized)-with Concrete Field Paving	707.04 Polymeric Coated over galvanized steel	***707.04 Polymeric Coated-with Concrete Field Paving	707.05 or 707.07 (707.01 or 707.02 galvanized) 1/2 Bituminous coated with Bituminous paved invert	***707.05 or 707.07 (707.01 or 707.02 aluminized) 1/2 Bituminous coated with Bituminous paved invert	**707.11 Polymer Precoated spiral rib steel	**707.12 or 707.17 Aluminum coated spiral rib steel	707.13 or 707.14 (707.01 or 707.02 galvanized) Bituminous lined galvanized steel	707.13 or 707.14 (707.01 or 707.02 aluminized) Bituminous lined aluminized steel	707.15 Galvanized steel box	**707.18 Polymer Precoated, Galvanized Steel Conduits with precoated galvanized smooth steel interior liner	**707.19 Aluminum coated Steel Conduits with precoated galvanized smooth steel interior liner	**707.20 Galvanized Coated Steel Conduits with precoated galvanized smooth steel interior liner	**748.06 Steel Casing Pipe non-galvanized Culvert or Liner Pipe-Round, Pipe Arch, or Box	707.21 or 707.22 Aluminum	707.23 Aluminum Structural Plate Culvert or Liner Pipe -Round, Pipe Arch, and Arch	707.24 Aluminum Spiral Rib Storm Sewer or Liner Pipe -Round	707.25 Aluminum Box Culvert -Box	707.21, 707.22, or 707.23 Aluminum Alloy or Aluminum Alloy Structural Plate with Concrete Invert Paving
Conduit Use and Shape		Culvert or Liner Pipe - Round or Pipe Arch	Culvert-Round, Pipe Arch, and Arch	Culvert or Liner Pipe -Round or Pipe Arch	Culvert -Round or Pipe Arch	Culvert or Liner Pipe - Round or Pipe Arch	Culvert-Round or Pipe Arch	Culvert -Round or Pipe Arch	Culvert -Round or Pipe Arch	Storm Sewer or Liner Pipe- Round	Liner Pipe- Round or Pipe Arch	Storm Sewer - Round or Pipe Arch	Storm Sewer -Round or Pipe Arch	Culvert -Box	Liner Pipe -Round	Liner Pipe -Round	Liner Pipe - Round	Culvert or Liner Pipe-Round, Pipe Arch, or Box	Culvert or Liner Pipe-Round or Pipe Arch	Culvert or Liner Pipe -Round, Pipe Arch, and Arch	Storm Sewer or Liner Pipe -Round	Culvert -Box	Culvert - Round or Pipe Arch
min gauge or thickness	Corr. Depth (inches)																						
	1/4 or 1/2	16	16	16	16	16	16	16	16	N/A	N/A	16	16	N/A	16	16	16	0.5	12	N/A	N/A	N/A	12
	1	16	16	16	16	16	16	16	16	N/A	N/A	16	16	N/A	N/A	N/A	N/A		16	N/A	N/A	N/A	16
	2	N/A	N/A	N/A	N/A	N/A	N/A	N/A	N/A	N/A	N/A	N/A	N/A	N/A	N/A	N/A	N/A		N/A	N/A	N/A	N/A	N/A
3/4	N/A	N/A	N/A	N/A	N/A	N/A	N/A	N/A	N/A	16	16	N/A	N/A	N/A	N/A	N/A	N/A		N/A	N/A	12	N/A	N/A
max gauge or thickness	1/4 or 1/2	8	8	10	10	10	10	8	10	N/A	N/A	8	10	N/A	12	12	12	0.5	8	N/A	12	N/A	8
	1	8	8	10	10	10	10	8	10	N/A	N/A	8	10	N/A	N/A	N/A	N/A		10	N/A	N/A	N/A	10
	2	N/A	N/A	N/A	N/A	N/A	N/A	N/A	N/A	N/A	N/A	N/A	N/A	N/A	N/A	N/A	N/A		N/A	N/A	N/A	N/A	N/A
	3/4	N/A	N/A	N/A	N/A	N/A	N/A	N/A	N/A	12	12	N/A	N/A	N/A	N/A	N/A	N/A		N/A	N/A	12	N/A	N/A
Gauge	Thickness (inches)																						
16	0.064																						
14	0.079																						
12	0.109																						
10	0.138																						
8	0.168																						
7	0.188																						
5	0.218																						
3	0.249																						
1	0.28																						
Casing	0.5																						

Concrete Conduit Durability Results						
Material	**706.01 Non-reinforced Concrete Pipe	**706.02 Reinforced Concrete Circular Pipe	**706.03 Reinforced Concrete Pipe, Epoxy Coated	**706.04 Reinforced Concrete Elliptical Culvert, Storm Drain, and Sewer Pipe	**706.05 Precast Reinforced Concrete Box Sections	706.08 Clay Drain Tile
Conduit Use and Shape	Culvert or Storm Sewer - Round	Culvert or Storm Sewer -Round	Culvert or Storm Sewer - Round or Elliptical	Culvert or Storm Sewer -Elliptical	Culvert or Storm Sewer - Box	Culvert or Storm Sewer - Round

Plastic Conduit Durability Results													
Material	707.33 Corrugated Polyethylene Smooth Lined Pipe	707.34 Polyethylene Plastic Pipe Based on Outside Diameter (OD)	707.35 Polyethylene Profile Wall Pipe	707.42 Polyvinyl Chloride Corrugated Smooth Interior Pipe	707.43 Polyvinyl Chloride Profile Wall Pipe	707.45 Polyvinyl Chloride Solid Wall Pipe	707.46 Polyvinyl Chloride Drain Waste and Vent Pipe	707.47 ABS and Polyvinyl Chloride Composite Pipe	707.48 Polyvinyl Chloride Large-Diameter Solid Wall Pipe	707.65 Corrugated Polypropylene Smooth Lined Pipe	707.75 Glass-Fiber-Reinforced Polymer Mortar Pipe	707.85 Steel Reinforced Thermoplastic Ribbed Pipe	748.02 Polyvinyl Chloride (PVC) Pipe, Joints, and Fittings
Conduit Use and Shape	Culvert, Storm Sewer, or Liner Pipe - Round	Culvert, Storm Sewer, or Liner Pipe - Round	Culvert, Storm Sewer, or Liner Pipe - Round	Storm Sewer or Liner Pipe - Round	Storm Sewer or Liner Pipe - Round	Storm Sewer - Round	Storm Sewer - Round	Storm Sewer - Round	Storm Sewer - Round	Culvert or Storm Sewer - Round	Culvert, Storm Sewer, or Liner Pipe - Round	Culvert or Liner Pipe - Round	Storm Sewer - Round

Notes:

- Many metal options are eliminated when abrasion level equals 4 or greater
- Aluminum is only available between pH levels ranging from 5.0 to less than 9.0
- Aluminized protective coating is 0 years when pH levels are outside of allowable for Aluminum
- Polymeric coated is only available for pH ranges greater than 5.0 and less than 9.0
- Options were eliminated when the NCSPA online Service Life Calculator did not recommend option; typically due to abrasive conditions or pH limitations
- Epoxy is required on all concrete surfaces when pH<5
- \*\* Smooth lined conduit
- \*\*\*Minimum gauges set per industry comments; see Reference Data
- Provide concrete field paving on corrugated metal conduits 60" or larger where the invert is always submerged due to tail water conditions from a body of water
- Designer is responsible to ensure the required gage thickness is available for the given pipe size

Constants	
Protective Coating Constants-Initial Service Life (years)	
Concrete Invert Paving=	20
Aluminized=	35
Aluminized Spiral Rib=	35
Polymeric=	50
Bituminous coated w/ bitum. paved invert=	10
Bituminous lined =	25
Galvanized=	0

# Ohio Department of Transportation County Engineer Approval Form



Date Submitted to District:

\_\_\_\_\_

Date Submitted to County Engineer:

\_\_\_\_\_

County - Route - Section:

\_\_\_\_\_

PID:

\_\_\_\_\_

Station	Size & Type	Culvert Invert Elevation		Ex. Channel Elevation		Skew
		Inlet	Outlet	Inlet	Outlet	

*I have reviewed and hereby approve the drainage proposed for the highway designated hereon in accordance with the provisions of the Ohio Revised Code, Section 6131.631.*

\_\_\_\_\_  
County

\_\_\_\_\_  
County Engineer's Signature

\_\_\_\_\_  
Date

Comments:

\_\_\_\_\_  
\_\_\_\_\_  
\_\_\_\_\_



**PROJECT INFORMATION:**

COUNTY	ROUTE	SECTION	PID

**PIPE POLICY:**

The Pipe Policy of \_\_\_\_\_ will be used for this project.

---

---

---

(Attach a copy of the written pipe policy or furnish a link to the policy. In lieu of a written policy, documentation of locally funded construction practices may be provided)

**POST CONSTRUCTION BMP POLICY:**

The Post Construction BMP Policy of \_\_\_\_\_ will be used for this project.

If a policy other than ODOT's is being used, the following BMP's are permitted:

---

---

---

**DRAINAGE WATERSHED(S):**

---

---

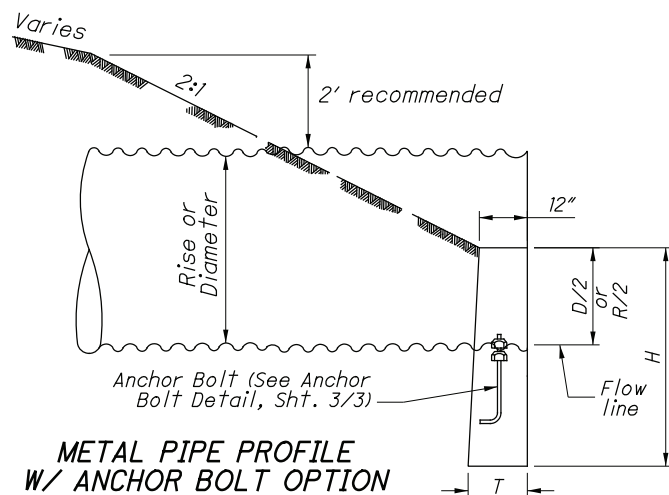
---

**PROJECT SPECIFIC INFORMATION AFFECTING DRAINAGE:**

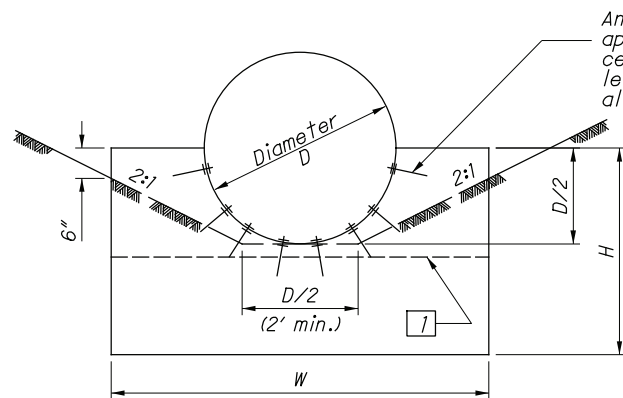
---

---

---

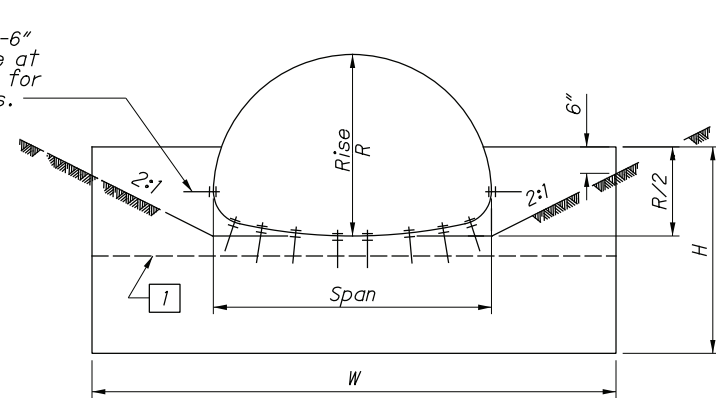


METAL PIPE PROFILE  
W/ ANCHOR BOLT OPTION



CIRCULAR

METAL PIPE END TREATMENT "A" W/ ANCHOR BOLT OPTION

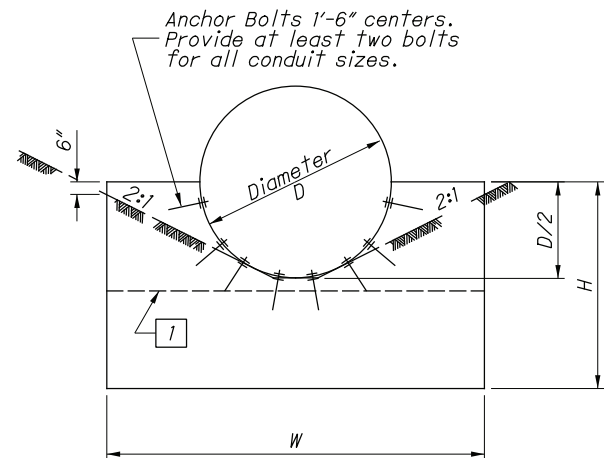


PIPE-ARCH

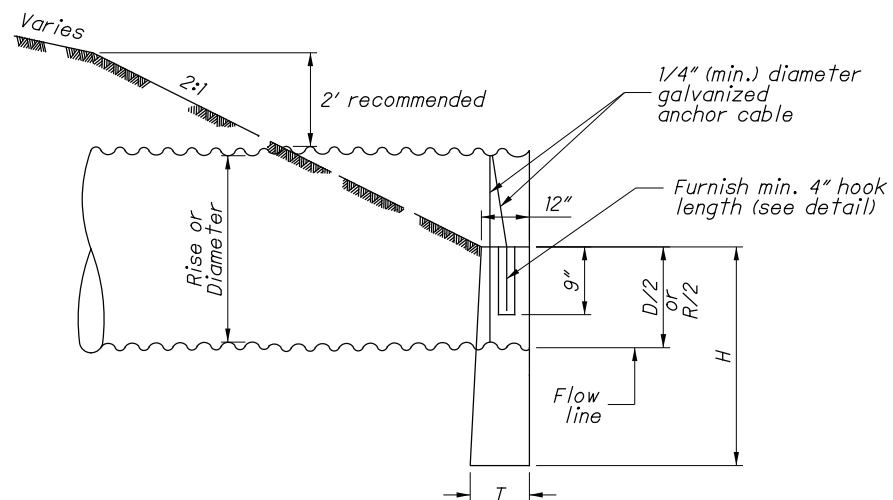
CAST-IN-PLACE HW FOR CORRUGATED METAL PIPE & PLASTIC PIPE (English)																
CIRCULAR					PIPE ARCH						PIPE ARCH					
D	W	H	T	CONC. cu. yds.	SPAN	RISE	W	H	T	CONC. cu. yds.	SPAN	RISE	W	H	T	CONC. cu. yds.
12"	2'-0"	3'-0"	12"	0.21	2.67"x1/2" Corrugations						*81"	59"	12'-4"	5'-5"	15"	2.14
15"	2'-6"	3'-2"	12"	0.27	17"	13"	3'-0"	3'-0"	12"	0.31	87"	63"	13'-0"	5'-7"	17"	2.50
18"	3'-0"	3'-3"	12"	0.33	21"	15"	3'-6"	3'-0"	12"	0.35	95"	67"	14'-0"	5'-9"	20"	3.14
21"	3'-6"	3'-4"	12"	0.39	24"	18"	4'-0"	3'-2"	12"	0.43	103"	71"	15'-0"	5'-11"	22"	3.54
24"	4'-0"	3'-6"	12"	0.46	28"	20"	4'-6"	3'-3"	12"	0.48	112"	75"	16'-0"	6'-1"	24"	3.96
27"	4'-6"	3'-8"	12"	0.53	35"	24"	5'-6"	3'-5"	12"	0.61	117"	79"	17'-9"	6'-3"	25"	4.89
30"	5'-0"	3'-9"	12"	0.60	42"	29"	6'-6"	3'-7"	12"	0.73	128"	83"	18'-0"	6'-5"	26"	5.01
33"	5'-6"	3'-10"	12"	0.68	49"	33"	7'-8"	3'-9"	12"	0.90	137"	87"	19'-0"	6'-7"	27"	5.45
36"	6'-0"	4'-0"	12"	0.76	57"	38"	9'-0"	4'-0"	12"	1.10	142"	91"	20'-9"	6'-9"	27"	6.31
39"	6'-6"	4'-2"	12"	0.84	64"	43"	10'-0"	4'-4"	12"	1.31	6"x2" Corrugations (18" Corner Radius)					
42"	7'-0"	4'-3"	12"	0.92	71"	47"	11'-0"	4'-8"	12"	1.54	*6'-1"	4'-7"	11'-8"	5'-7"	12"	1.89
48"	8'-0"	4'-6"	12"	1.10	*77"	52"	11'-8"	5'-3"	12"	1.84	*6'-4"	4'-9"	12'-0"	5'-8"	14"	2.12
54"	9'-3"	4'-9"	12"	1.33	*83"	57"	12'-4"	5'-5"	15"	2.46	*6'-9"	4'-11"	12'-4"	5'-9"	15"	2.42
60"	10'-6"	5'-6"	12"	1.78	6"x2" Corrugations (31" Corner Radius)						*7'-0"	5'-1"	12'-8"	5'-10"	16"	2.44
66"	11'-9"	5'-9"	12"	2.06	13'-3"	9'-4"	23'-11"	7'-11"	32"	9.63	7'-3"	5'-3"	12'-11"	5'-11"	17"	2.69
72"	13'-0"	6'-0"	12"	2.37	13'-6"	9'-6"	24'-9"	8'-0"	32"	10.12	7'-8"	5'-5"	13'-2"	6'-0"	18"	2.77
78"	14'-3"	6'-3"	14"	2.94	14'-0"	9'-8"	24'-10"	8'-1"	33"	10.33	7'-11"	5'-7"	14'-0"	6'-1"	20"	3.15
84"	15'-6"	6'-6"	14"	3.30	14'-2"	9'-10"	25'-9"	8'-2"	33"	10.87	8'-2"	5'-9"	14'-8"	6'-2"	21"	3.45
90"	16'-9"	6'-9"	16"	4.00	14'-4"	10'-0"	26'-7"	8'-3"	33"	11.39	8'-7"	5'-11"	15'-0"	6'-3"	22"	3.75
96"	18'-0"	7'-0"	16"	4.40	14'-6"	10'-2"	26'-9"	8'-4"	34"	11.68	8'-10"	6'-1"	15'-10"	6'-4"	23"	4.15
102"	19'-3"	7'-3"	18"	5.28	15'-0"	10'-4"	26'-11"	8'-5"	34"	11.96	9'-4"	6'-3"	16'-0"	6'-5"	24"	4.65
108"	20'-6"	7'-6"	20"	6.21	15'-2"	10'-6"	27'-9"	8'-6"	34"	12.51	9'-6"	6'-5"	16'-10"	6'-6"	26"	4.93
114"	21'-9"	7'-9"	22"	7.25	15'-4"	10'-8"	28'-7"	8'-7"	35"	13.06	9'-9"	6'-7"	17'-9"	6'-7"	27"	5.41
120"	23'-0"	8'-0"	24"	8.38	15'-6"	10'-10"	28'-8"	8'-8"	35"	13.34	10'-3"	6'-9"	17'-10"	6'-8"	27"	5.45
*126"	23'-0"	8'-3"	26"	8.64	16'-3"	10'-10"	28'-8"	8'-8"	35"	13.34	10'-3"	6'-9"	17'-10"	6'-8"	27"	5.45
132"	23'-0"	8'-6"	28"	9.23	16'-6"	11'-0"	29'-7"	8'-9"	35"	13.94	10'-8"	6'-11"	17'-11"	6'-9"	27"	5.59
138"	24'-1"	8'-9"	30"	10.50	17'-0"	11'-2"	29'-8"	8'-10"	36"	14.24	10'-11"	7'-1"	18'-10"	6'-10"	28"	5.97
144"	25'-2"	9'-0"	32"	11.89	17'-2"	11'-4"	30'-7"	8'-11"	36"	14.84	11'-5"	7'-3"	18'-11"	6'-11"	28"	6.12
150"	26'-4"	9'-3"	34"	13.38	17'-5"	11'-6"	31'-5"	9'-0"	36"	15.42	11'-7"	7'-5"	19'-9"	7'-0"	28"	6.52
156"	27'-5"	9'-6"	36"	15.01	17'-7"	11'-8"	31'-7"	9'-1"	37"	15.83	11'-10"	7'-7"	20'-9"	7'-1"	29"	6.94
162"	28'-7"	9'-9"	38"	16.75	18'-1"	11'-10"	32'-5"	9'-2"	37"	16.43	12'-4"	7'-9"	20'-10"	7'-2"	29"	7.12
168"	29'-8"	10'-0"	40"	18.61	18'-3"	12'-0"	32'-6"	9'-3"	37"	16.78	12'-6"	7'-11"	21'-8"	7'-3"	29"	7.53
174"	30'-9"	10'-3"	42"	20.28	18'-5"	12'-2"	33'-4"	9'-4"	38"	17.43	12'-8"	8'-1"	22'-7"	7'-4"	30"	7.95
180"	31'-11"	10'-6"	43"	21.87	19'-3"	12'-4"	33'-5"	9'-5"	38"	17.78	12'-10"	8'-4"	23'-7"	7'-5"	30"	8.48
186"	33'-0"	10'-9"	44"	23.54	19'-6"	12'-6"	34'-5"	9'-6"	38"	18.49	13'-5"	8'-5"	23'-7"	7'-6"	30"	8.63
192"	34'-2"	11'-0"	45"	25.30	19'-8"	12'-8"	35'-3"	9'-7"	39"	19.19	13'-7"	8'-7"	23'-7"	7'-7"	31"	8.81
198"	35'-3"	11'-3"	46"	27.12	19'-11"	12'-10"	36'-3"	9'-8"	39"	19.95	14'-1"	8'-9"	25'-1"	7'-8"	31"	9.29
204"	36'-4"	11'-6"	47"	29.15	20'-5"	13'-0"	36'-3"	9'-9"	39"	20.30	14'-3"	8'-11"	25'-6"	7'-9"	31"	9.78
210"	37'-6"	11'-9"	48"	31.03	20'-7"	13'-2"	37'-2"	9'-10"	40"	21.05	14'-10"	9'-1"	25'-6"	7'-10"	32"	10.25
216"	38'-7"	12'-0"	49"	33.43	3"x1" Corrugations						15'-4"	9'-3"	25'-6"	7'-11"	32"	10.25
222"	39'-9"	12'-3"	50"	36.26	40"	31"	6'-6"	3'-7"	12"	0.70	15'-6"	9'-5"	26'-5"	8'-0"	32"	10.74
228"	40'-10"	12'-6"	51"	37.52	46"	36"	7'-8"	3'-9"	12"	0.85	15'-8"	9'-7"	27'-5"	8'-1"	33"	11.28
234"	42'-0"	12'-9"	52"	39.86	53"	41"	9'-0"	4'-0"	12"	1.06	15'-10"	9'-10"	28'-5"	8'-2"	33"	12.00
240"	43'-1"	13'-0"	53"	42.28	60"	46"	10'-0"	4'-4"	12"	1.27	16'-5"	9'-11"	28'-5"	8'-3"	33"	12.09
246"	44'-2"	13'-3"	54"	44.83	66"	51"	11'-0"	4'-8"	12"	1.54	16'-7"	10'-1"	29'-4"	8'-4"	34"	12.64
252"	45'-4"	13'-6"	55"	47.44	*73"	55"	11'-8"	5'-3"	12"	1.81	--	--	--	--	--	--

\* Determine channel configuration for pipe sizes between end treatment "A" and end treatment "B" by 2:1 slopes passing through a point 6" below the top and at each side of the headwall. For end treatment "B", 2:1 slopes are tangent to pipe.

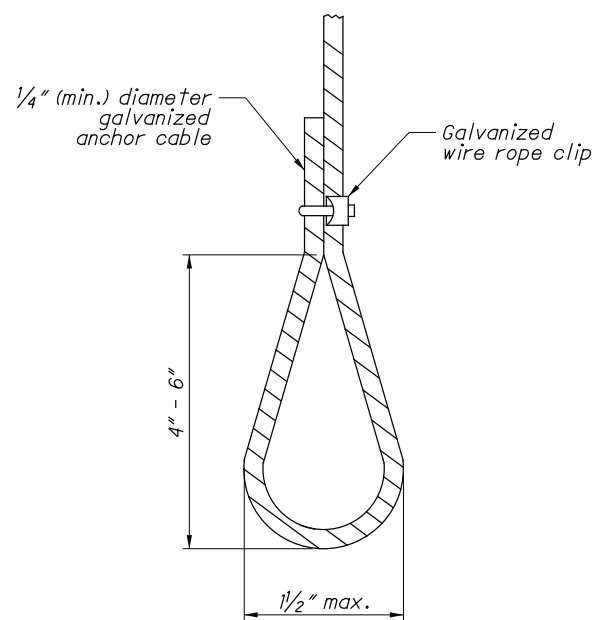
1 Top surface of 6" inlet headwall extension



METAL PIPE END TREATMENT "B"  
W/ ANCHOR BOLT OPTION



PLASTIC & METAL PIPE PROFILE  
W/ ANCHOR CABLE OPTION



ANCHOR CABLE DETAIL

### NOTES

Tightly Wrap galvanized anchor cable one time completely around the circumference of the conduit. Furnish hook at least 4" long at the ends of the anchor cable as shown above.

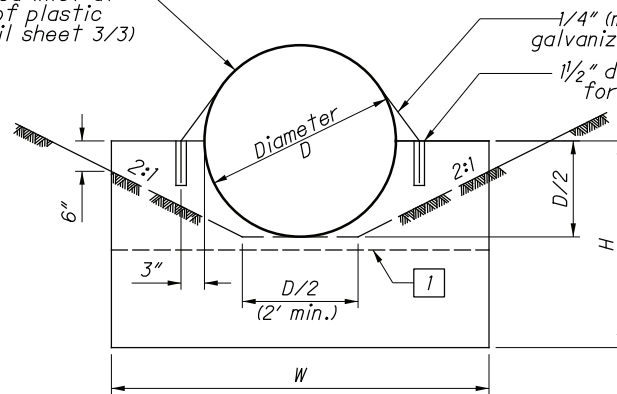
Cut galvanized anchor cable to length required.

Form or drill 1 1/2" diameter openings for anchor cable at locations shown. Alternatively, place anchor cable in wet concrete at the dimensions shown above to secure conduit to headwall.

Fill any openings made for anchor cables with grout after the cables are placed to a taut fit.

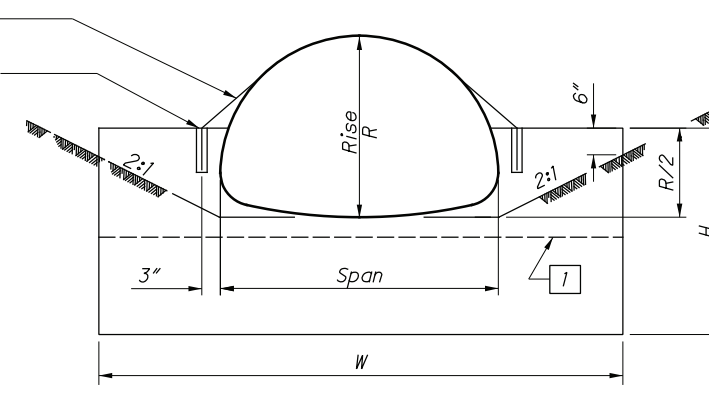
Secure cables such that they are taut after the grout or concrete has cured.

Provide improved inlet at upstream end of plastic pipe (see detail sheet 3/3)



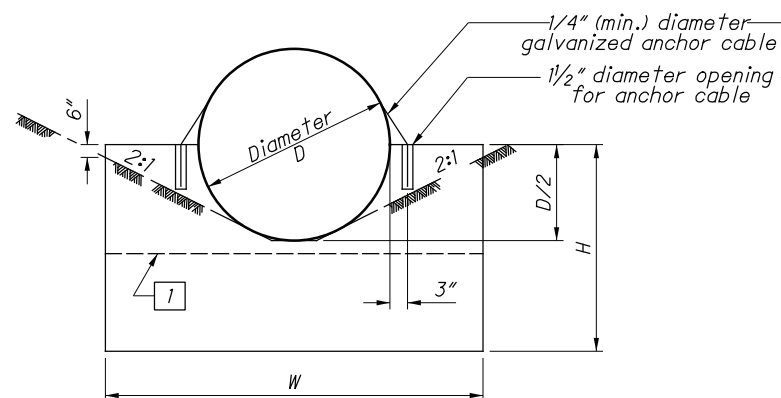
CIRCULAR

PLASTIC & METAL PIPE END TREATMENT "A"  
W/ ANCHOR CABLE OPTION

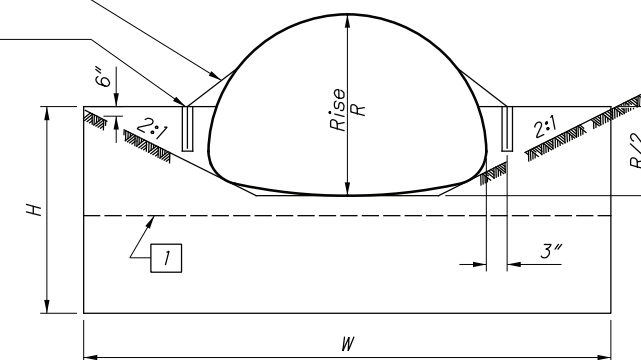


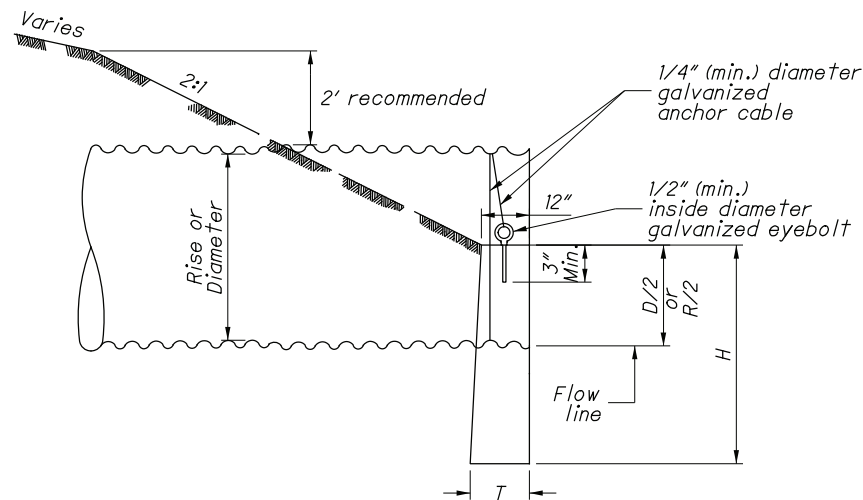
METAL PIPE-ARCH

1 Top surface of 6" inlet headwall extension

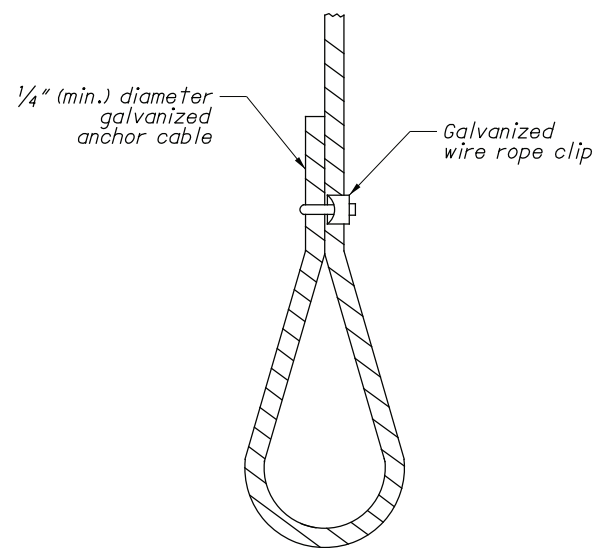


METAL PIPE END TREATMENT "B"  
W/ ANCHOR CABLE OPTION





PLASTIC & METAL PIPE PROFILE  
W/ ANCHOR CABLE EYE BOLT OPTION



ANCHOR CABLE DETAIL FOR EYEBOLT OPTION

### NOTES

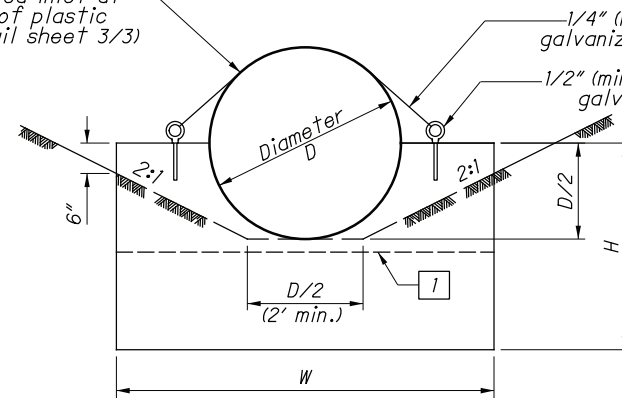
Drill openings a min. of 3" deep for eyebolts at the locations shown. Insert entire length of bolt shank into opening. Fill openings with grout and allow to harden before securing anchor cable. Alternatively, place eyebolts in wet concrete at the locations shown above.

Tightly wrap galvanized anchor cable one time completely around the circumference of the conduit.

Cut galvanized anchor cable to length required.

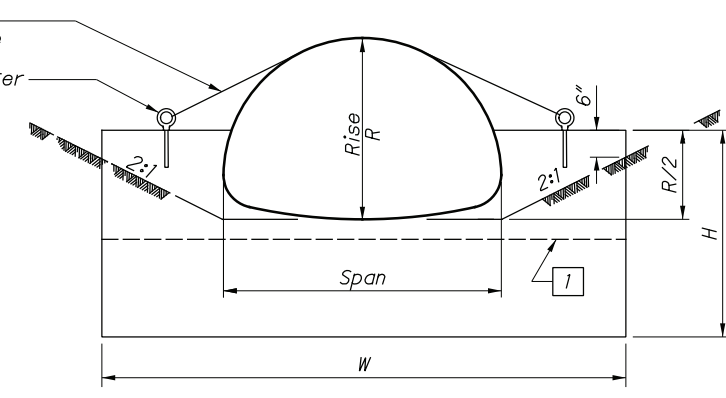
Place cable through eyebolt and form a loop as shown in the above detail. Ensure the cable is pulled to a tight fit and secured with a galvanized wire rope clip.

Provide improved inlet at upstream end of plastic pipe (see detail sheet 3/3)



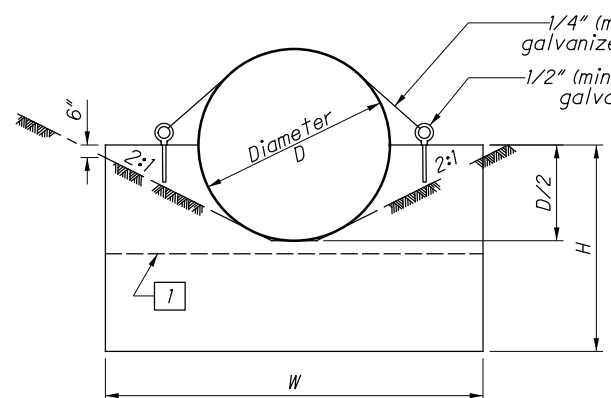
CIRCULAR

PLASTIC & METAL PIPE END TREATMENT "A"  
W/ ANCHOR CABLE EYE BOLT OPTION

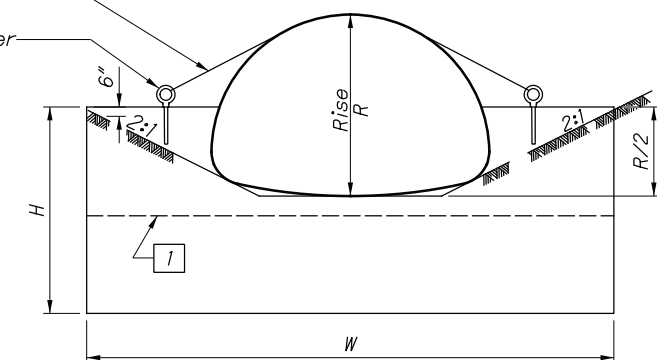


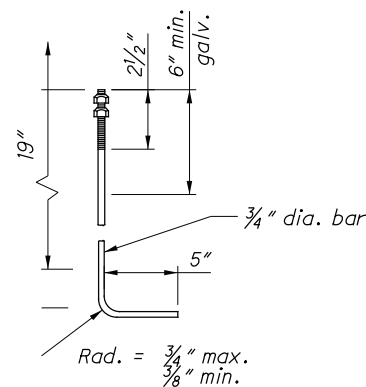
METAL PIPE-ARCH

1 Top surface of 6" inlet headwall extension

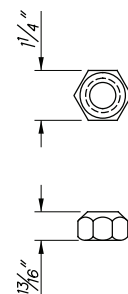


METAL PIPE END TREATMENT "B"  
W/ ANCHOR CABLE EYE BOLT OPTION



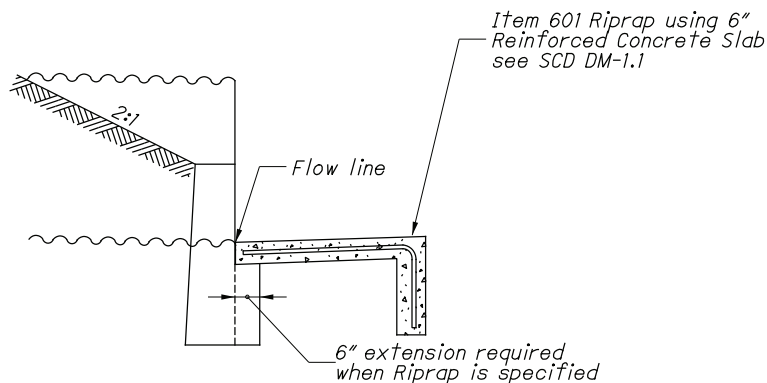


ANCHOR BOLT

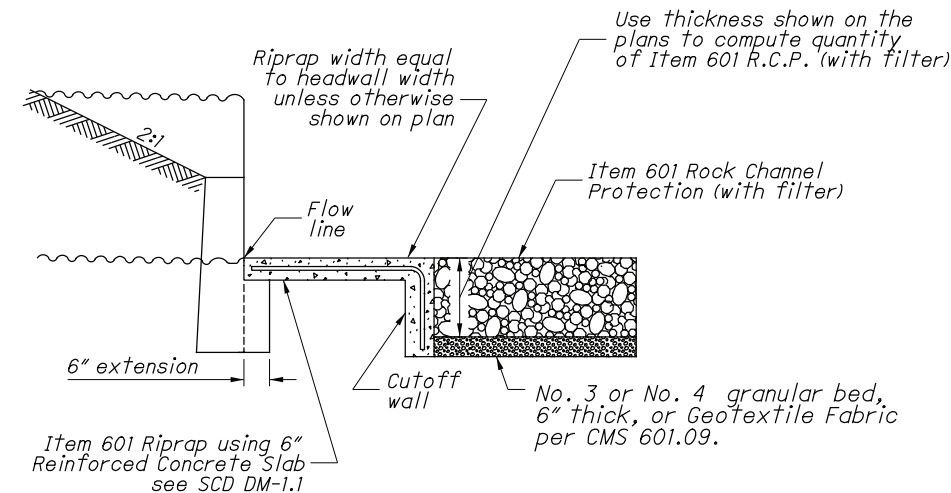


NUT

(ASTM A 325 and A 153)



INLET CHANNEL PROTECTION  
DETAIL



OUTLET CHANNEL PROTECTION DETAIL

## NOTES

**GENERAL:** Provide a riprap reinforced concrete slab according to SCD DM-1.1 if the pipe is depressed or it is specified in the plan. Payment for the slab is made per square yard of **Item 601 Riprap Using 6" Reinforced Concrete Slab** and includes the cost of the cutoff wall.

This drawing is for cast-in-place half-height concrete headwalls. Precast half-height headwalls are only approved for round conduits with a maximum conduit diameter of 78". When precast headwalls are furnished, provide openings for the anchor cable as shown and fill with grout after placement of the anchor cable. If anchor bolts are to be used with a precast headwall, fill the anchor cable openings with grout.

**CONCRETE:** Use 4000 psi compressive strength concrete for headwall. Concrete quantities are based on headwalls without the 6" extension under the channel protection.

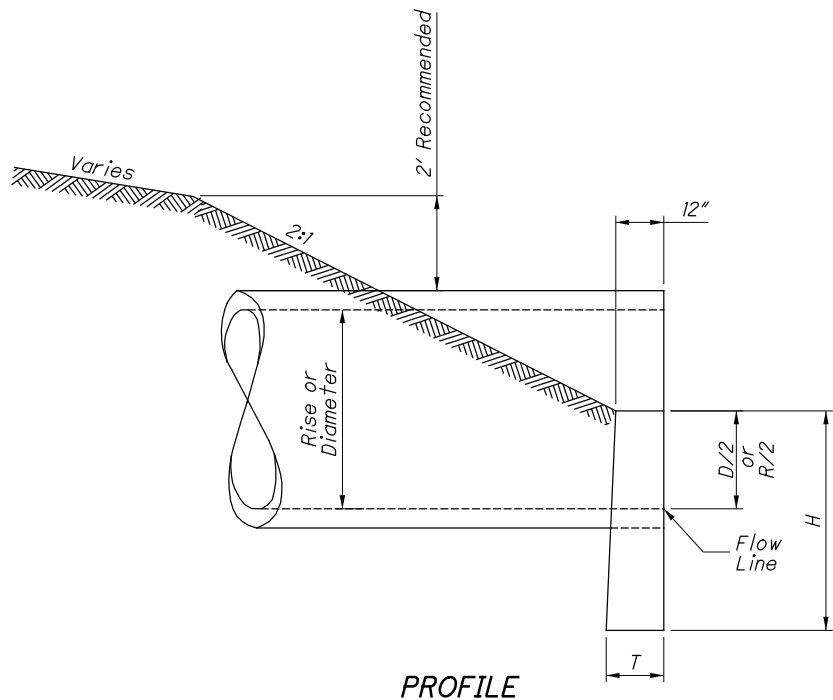
**ANCHOR BOLTS:** Furnish bolts (see detail sheet 2/3) that meet ASTM A 307 for anchoring both ends of metal pipe. The top 6" min. of the bolt must be galvanized according to ASTM A 153. Cost of anchors is included in the price bid per foot of Item 611.

Headwall dimensions are based on end treatment "A" for pipe sizes up to and including 120", 71"x47", and 66"x51", and on end treatment "B" for sizes over and including 132", 13'-3"x9'-4", and 7'-3"x5'-3".

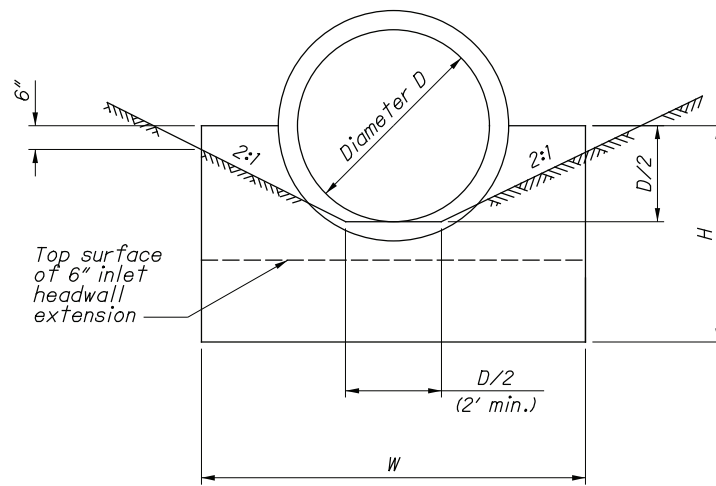
**PLASTIC PIPE:** Plastic pipe may not be available in all the sizes specified on this drawing.

**ANCHOR CABLE:** Furnish galvanized anchor cable (see detail sheet 2/4 & 3/4) that meets ASTM A 1023 for anchoring both ends of plastic or metal pipe. Wire rope clip must be galvanized according to ASTM A 153. Cost of anchor cable and wire rope clip is included in the unit price bid per foot of Item 611.

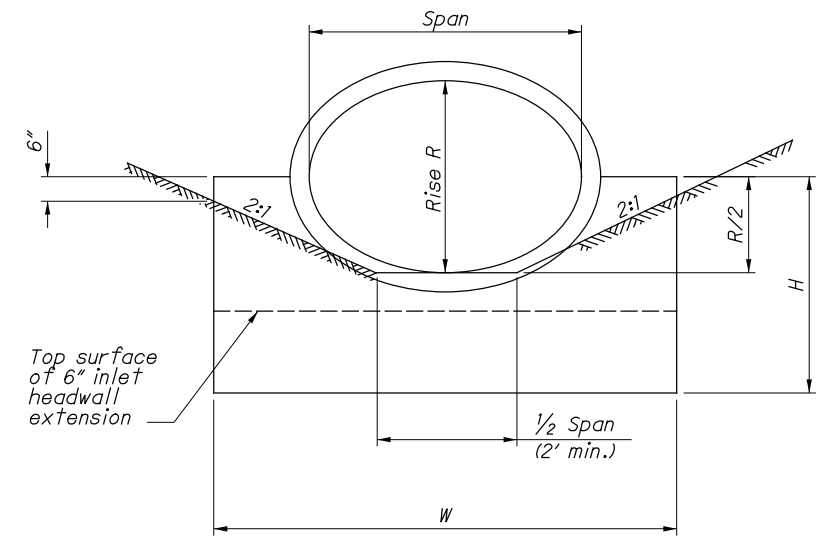
**EYEBOLTS:** Furnish eyebolts (see detail sheet 3/4) that meet ASTM A 489 for anchoring both ends of metal or plastic pipe. The eyebolts must be galvanized according to ASTM A 153. Furnish eyebolts with a min. I.D. eye of 1/2" and a min. shank length of 3". Cost of eyebolts is included in the price bid per foot of Item 611.



PROFILE



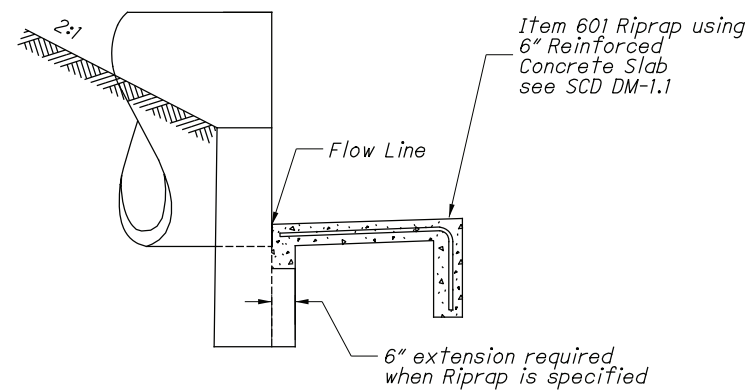
CIRCULAR



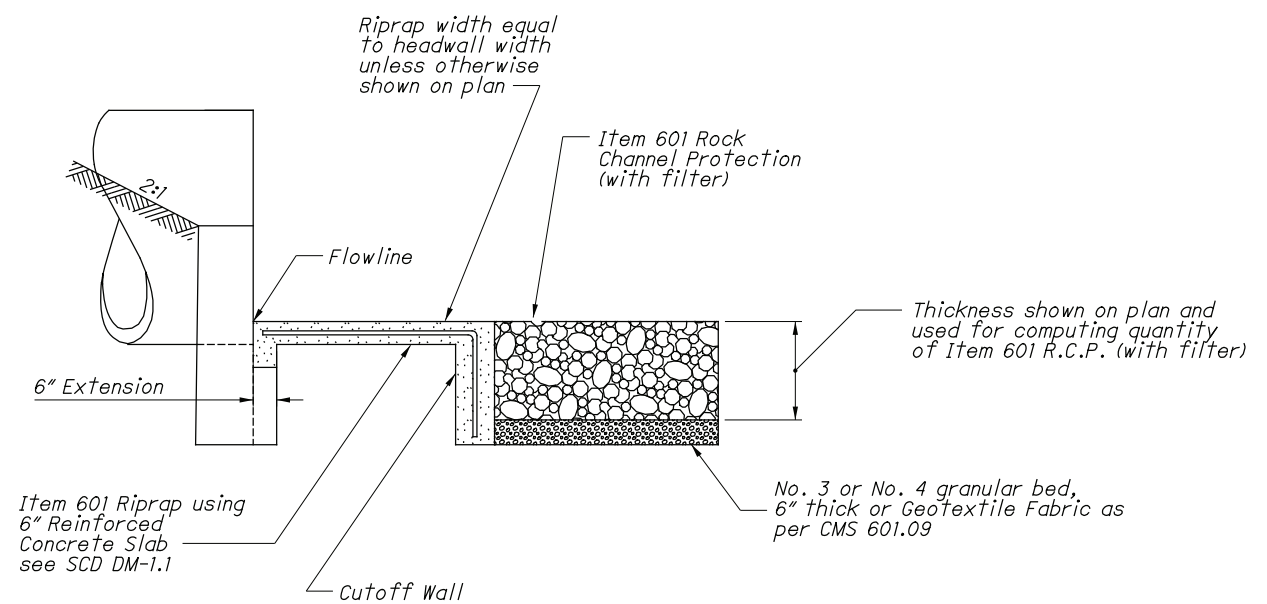
ELLIPTICAL

## CONCRETE PIPE

See Sheet 2 of 2 for  
Pipe Tables and NOTES.

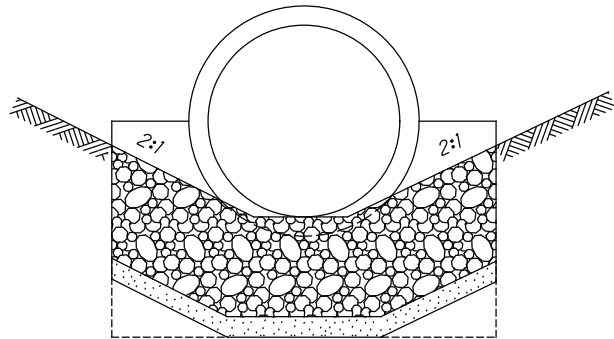


INLET CHANNEL PROTECTION DETAIL



OUTLET CHANNEL PROTECTION DETAIL





Riprap and rock channel protection width equal to headwall width unless otherwise shown on the plans. (Minimum width 4'-0".)

NOTES

**GENERAL:** Provide a riprap reinforced concrete slab according to SCD DM-1.1 if the pipe is depressed or it is specified in the plan. Payment for the slab is made per square yard of **Item 601 Riprap Using 6" Reinforced Concrete** Slab and includes the cost of the cutoff wall.

This drawing is for cast in place half-height concrete headwalls. Precast half-height headwalls are only approved for round conduits with a maximum conduit diameter of 78".

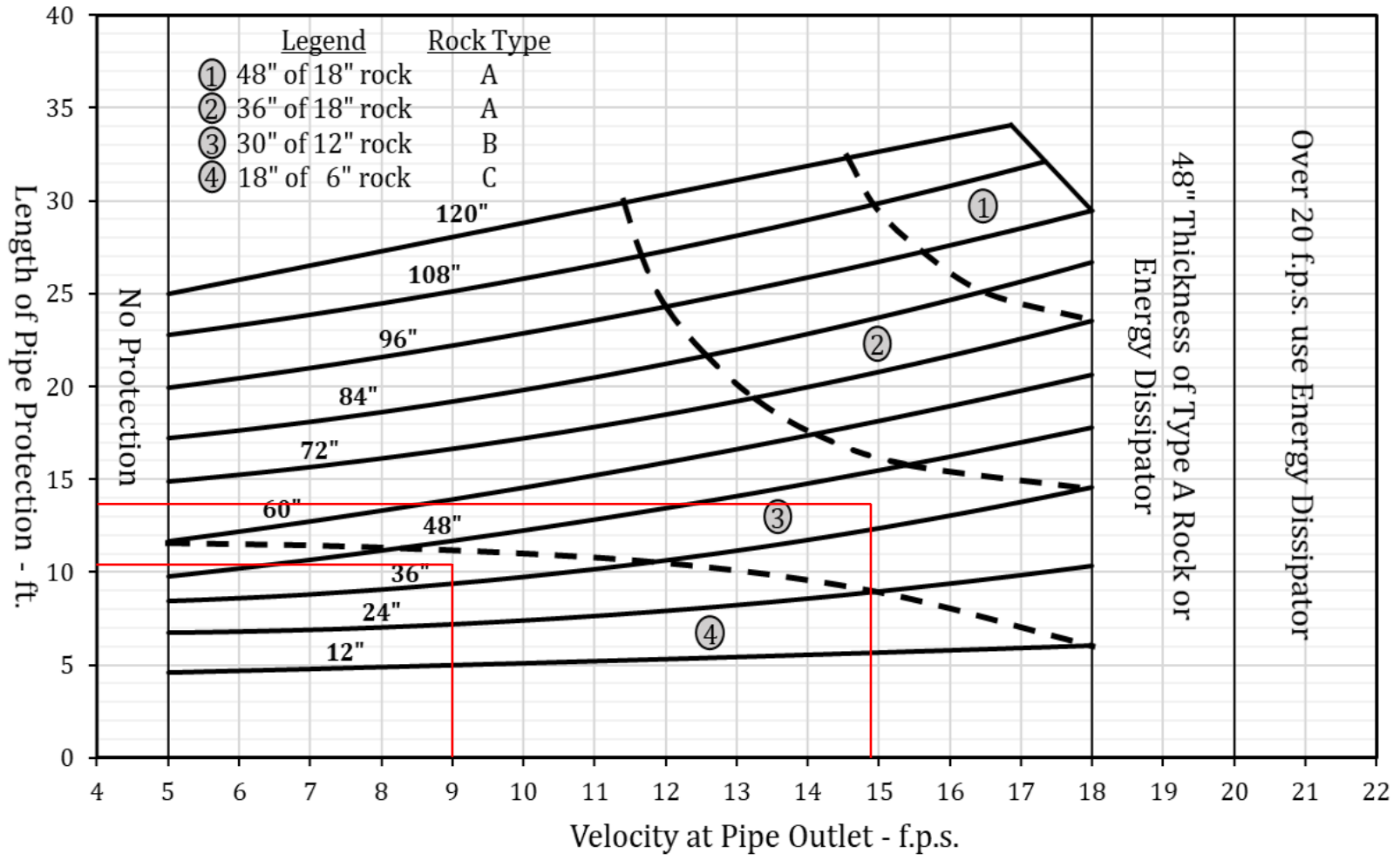
**CONCRETE:** Use 4000 psi compressive strength concrete for headwalls.

Concrete quantities are based on headwalls without the 6" extension under the channel protection.

C.I.P. HEADWALL FOR CONCRETE PIPE (English)										
CIRCULAR					ELLIPTICAL					
D	W	H	T	Conc. cu. yds.	Rise	Span	W	H	T	Conc. cu. yds.
12"	2'-0"	3'-0"	12"	0.20	--	--	--	--	--	--
15"	2'-6"	3'-2"	12"	0.25	--	--	--	--	--	--
18"	3'-0"	3'-3"	12"	0.31	14"	23"	3'-0"	3'-2"	12"	0.29
21"	3'-6"	3'-4"	12"	0.37	19"	30"	3'-7"	3'-4"	12"	0.35
24"	4'-0"	3'-6"	12"	0.43	22"	34"	3'-11"	3'-5"	12"	0.38
27"	4'-6"	3'-8"	12"	0.49	24"	38"	4'-6"	3'-6"	12"	0.44
30"	5'-0"	3'-9"	12"	0.56	--	--	--	--	--	--
33"	5'-6"	3'-10"	12"	0.62	29"	45"	5'-2"	3'-8"	12"	0.49
36"	6'-0"	4'-0"	12"	0.69	--	--	--	--	--	--
39"	6'-6"	4'-2"	12"	0.77	34"	53"	5'-11"	4'-0"	14"	0.66
42"	7'-0"	4'-3"	12"	0.84	38"	60"	6'-10"	4'-2"	14"	0.82
48"	8'-0"	4'-6"	14"	1.09	43"	68"	8'-0"	4'-4"	16"	1.01
54"	9'-3"	4'-9"	14"	1.32	48"	76"	9'-2"	5'-0"	16"	1.34
60"	10'-6"	5'-6"	16"	1.93	53"	83"	10'-4"	5'-2"	18"	1.65
66"	11'-9"	5'-9"	18"	2.42	58"	91"	11'-6"	5'-5"	18"	1.97
72"	13'-0"	6'-0"	18"	2.77	63"	98"	12'-7"	5'-7"	20"	2.38
78"	14'-3"	6'-3"	20"	3.37	68"	106"	13'-9"	5'-10"	20"	2.69
84"	15'-6"	6'-6"	22"	4.05	72"	113"	14'-9"	6'-0"	22"	3.14
90"	16'-9"	6'-9"	22"	4.51	77"	121"	15'-11"	6'-3"	22"	3.49
96"	18'-0"	7'-0"	24"	5.31	82"	128"	17'-0"	6'-5"	24"	4.04
102"	19'-3"	7'-3"	26"	6.20	87"	136"	18'-2"	6'-8"	24"	4.84
108"	20'-6"	7'-6"	26"	6.78	92"	143"	19'-4"	6'-10"	26"	5.12
114"	21'-9"	7'-9"	28"	7.81	97"	151"	20'-6"	7'-1"	26"	5.42
120"	23'-0"	8'-0"	30"	8.93	106"	166"	22'-7"	7'-5"	28"	6.60
126"	24'-3"	8'-3"	30"	9.57	116"	180"	24'-10"	7'-10"	30"	7.99
132"	25'-6"	8'-6"	32"	10.84	--	--	--	--	--	--
144"	28'-8"	9'-0"	34"	13.00	--	--	--	--	--	--

ATB-45-17.196  
42" Smooth w/ 14.9 fps  
14'Lx7"Wx30"T Type B  
OR  
42" Corrugated w/ 9.0 fps  
11'Lx7"Wx18"T Type C

Rock Channel Protection at Culvert and Storm Drain Outlets



ROCK CHANNEL PROTECTION AT CULVERT AND STORM SEWER OUTLETS	1002-4
	REFERENCE SECTION 1002.2.3

July 2021



ROCK CHANNEL PROTECTION AT CULVERT AND STORM SEWER OUTLETS	1002-4
	REFERENCE SECTION 1002.2.3

**Notes:**

Rock size (6", 12", 18") indicates the square opening on which 85% of the material by weight is retained.

Provide rock channel protection the width of the headwall with a minimum of 4'.

No rock channel protection is required where the natural stream bed will withstand the calculated velocity without erosion.

Equations for length of protection:

Rise	Length
120"	$L = 0.764996 * V + 21.17502$
108"	$L = 0.0203 * V^2 + 0.3004 * V + 20.765$
96"	$L = 0.0184 * V^2 + 0.3121 * V + 17.892$
84"	$L = 0.0261 * V^2 + 0.1234 * V + 15.970$
72"	$L = 0.0251 * V^2 + 0.0897 * V + 13.798$
60"	$L = 0.0139 * V^2 + 0.3683 * V + 9.4671$
48"	$L = 0.0151 * V^2 + 0.2661 * V + 8.0899$
36"	$L = 0.0262 * V^2 + 0.1341 * V + 8.4794$
24"	$L = 0.0182 * V^2 + 0.1404 * V + 6.983$
12"	$L = 0.0014 * V^2 + 0.0816 * V + 4.1255$

V=Velocity (f.p.s.)

L=Length of minimum Rock Channel Protection (ft.)